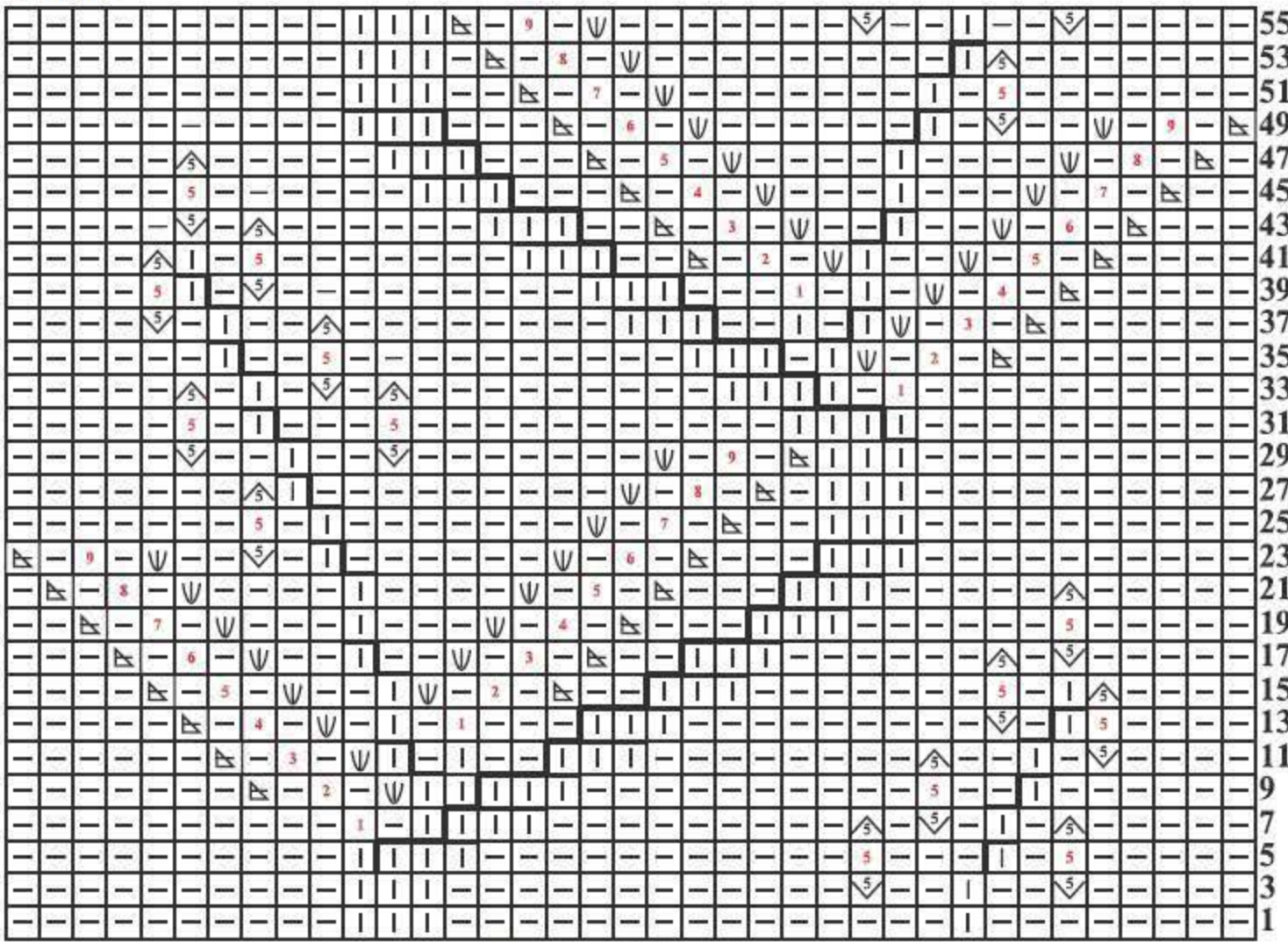
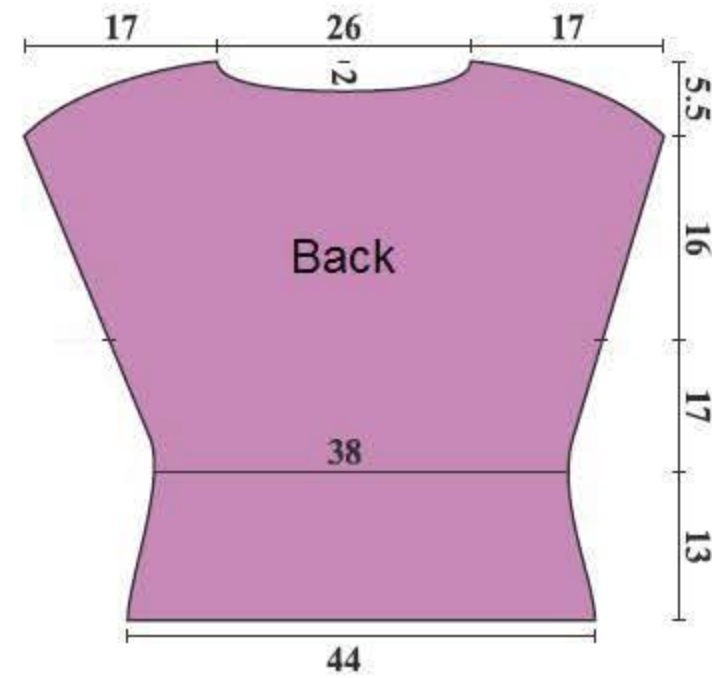
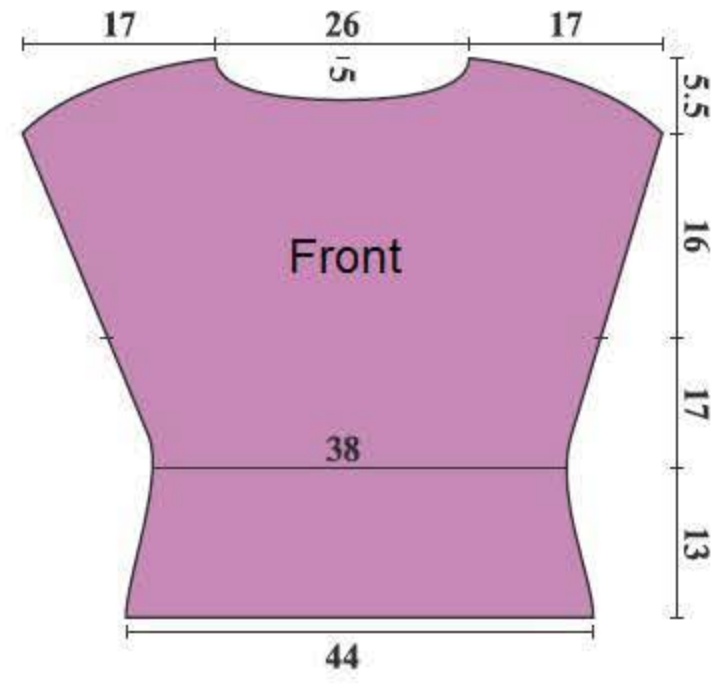
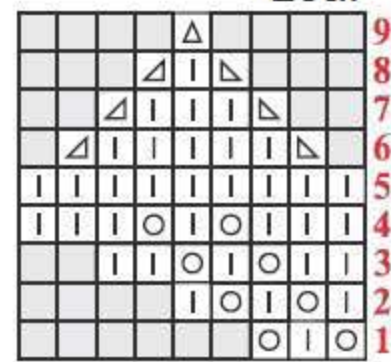


Chart

Leaf



rep pat = 37 sts



- P1
- K1
- 1 yo (yarn over)
- K2tog: knit 2 sts together
- slip1 st kwise, K2tog, pass slipped stitch over
- s2kpo = slip 2 kwise, knit 1, pass slipped stitches over
- P2tog.
- pick up loop lying between sts and K tbl
- increase 1-to-5
- K5 (on WS rows, work P5)
- skpo (sl 1 kwise, K2tog, pass slipped stitch over), K1, K2tog = 3 sts, on WS row P3tog.
- Cr2R: sl 1 onto cable needle and leave at back of work, K1 from left-hand needle, P st from cable needle
- Cr2L: sl 1 onto cable needle and leave at front of work, P1 from left-hand needle, K st from cable needle
- Cr4R: sl 1 kwise onto cable needle and leave at back of work, K3 from left-hand needle, K st from cable needle
- Cr4L: sl 3 kwise onto cable needle and leave at front of work, K1 from left-hand needle, K3 from cable needle
- Cr4R: sl 1 kwise onto cable needle and leave at back of work, K3 from left-hand needle, P st from cable needle
- Cr4L: sl 3 kwise onto cable needle and leave at front of work, P1 from left-hand needle, K3 from cable needle
- Cr5R: sl 2 kwise onto cable needle and leave at back of work, K3 from left-hand needle, K1, P1 from cable needle
- Cr5L: sl 3 kwise onto cable needle and leave at front of work, K1, P1 from left-hand needle, K3 from cable needle
- Cr5R: sl 2 kwise onto cable needle and leave at back of work, K3 from left-hand needle, P2 from cable needle
- Cr5L: sl 3 kwise onto cable needle and leave at front of work, P2 from left-hand needle, K3 from cable needle

no stitch