

## Wavy Knit Stitch Pattern



Cast on 25 stitches + 2 selv sts and work according to chart.

RS rows and WS rows are shown.

Read RS rows from right to left, WS rows from left to right.

RS rows and WS rows are shown with RS of work facing.

The pat rep = 12 sts.

Begin with 1 selv st and st before patt, rep patt, end with sts after patt rep and 1 selv st.

Repeat rows 1- 24 throughout.

Row 1 (rs): k25

Row 2 (ws): k25

Row 3 (rs): k25

Row 4 (ws): k25

Row 5 (rs): skp, k2tog, k1, yo, k1, yo, k1, yo, k1, yo, k1, skp, cdd, k2tog, k1, yo, k1, yo, k1, yo, k1, yo, k1, skp, k2tog

Row 6 (ws): p25

Row 7 (rs): skp, k2tog, k1, yo, k1, yo, k1, yo, k1, yo, k1, skp, cdd, k2tog, k1, yo, k1, yo, k1, yo, k1, yo, k1, skp, k2tog

Row 8 (ws): p25

Row 9 (rs): skp, k2tog, k1, yo, k1, yo, k1, yo, k1, yo, k1, skp, cdd, k2tog, k1, yo, k1, yo, k1, yo, k1, yo, k1, skp, k2tog

Row 10 (ws): p25

Row 11 (rs): skp, k2tog, k1, yo, k1, yo, k1, yo, k1, yo, k1, skp, cdd, k2tog, k1, yo, k1, yo, k1, yo, k1, yo, k1, skp, k2tog

Row 12 (ws): p25

Row 13 (rs): k25

Row 14 (ws): k25

Row 15 (rs): k25

Row 16 (ws): k25

Row 17 (rs): skp, k4, yo, k1, yo, k4, cdd, k4, yo, k1, yo, k4, k2tog

Row 18 (ws): p25

Row 19 (rs): skp, k4, yo, k1, yo, k4, cdd, k4, yo, k1, yo, k4, k2tog

Row 20 (ws): p25

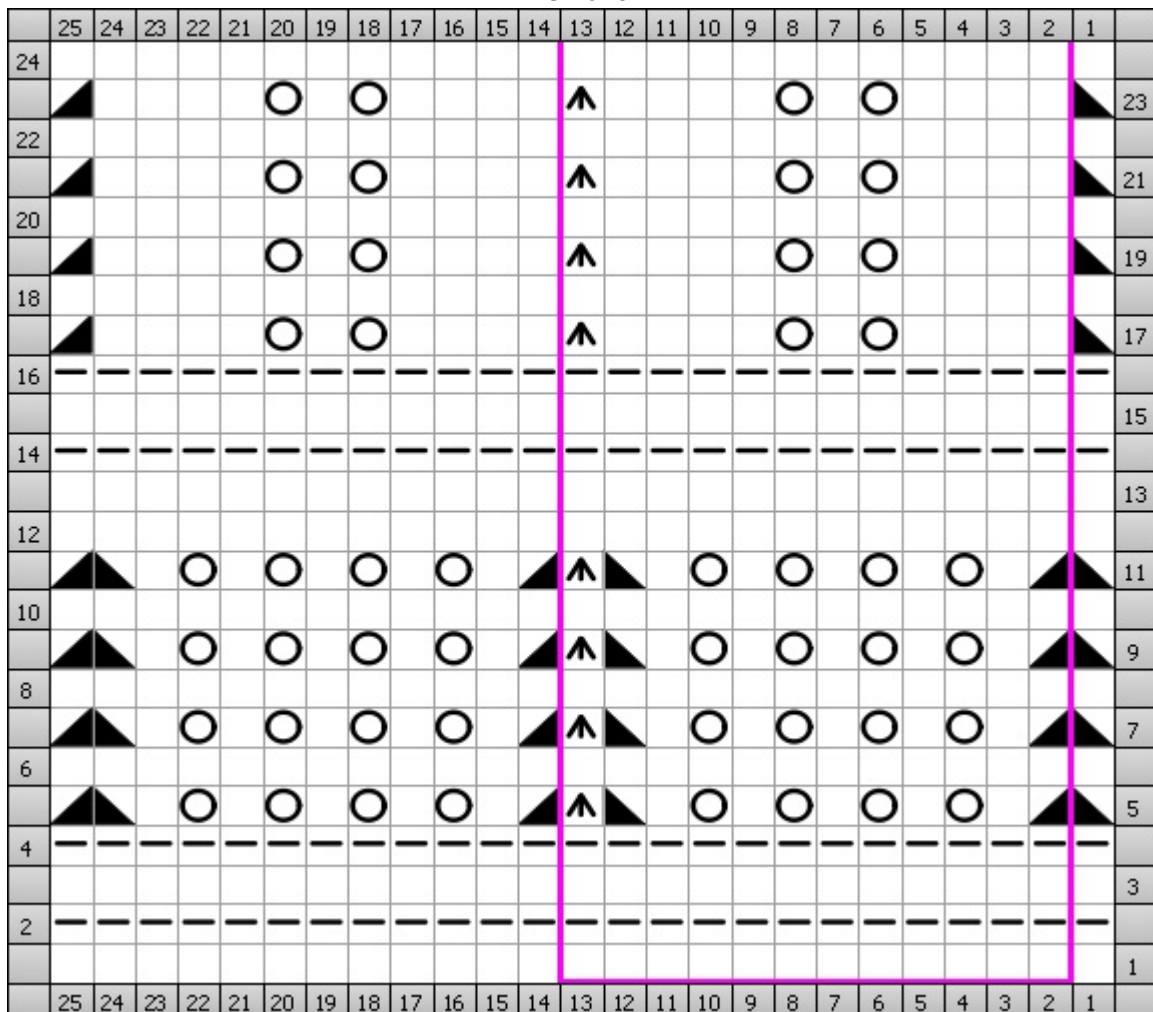
Row 21 (rs): skp, k4, yo, k1, yo, k4, cdd, k4, yo, k1, yo, k4, k2tog




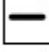


Row 22 (ws): p25

Row 23 (rs): skp, k4, yo, k1, yo, k4, cdd, k4, yo, k1, yo, k4, k2tog

Row 24 (ws): p25

### Chart



Key	
	<p>Central Double Decrease cdd</p> <p>(RS) slip 2 sts, knit 1, pass 2 slip sts over (WS) slip 2 sts together, purl next st, pass 2 slip stitches over</p>
	<p>Knit k</p> <p>(RS) Knit (WS) Purl</p>
	<p>Knit 2 Together k2tog</p> <p>(RS) Knit 2 stitches together (WS) Purl 2 Together</p>
	<p>Purl p</p> <p>(RS) Purl (WS) Knit</p>
	<p>SKP skp</p> <p>(RS) Slip 1, knit 1, pass slipped stitch over (WS) Purl 2 Together Thru back loop</p>
	<p>Yarn Over yo</p> <p>(RS) Yarn Over (WS) Yarn Over</p>