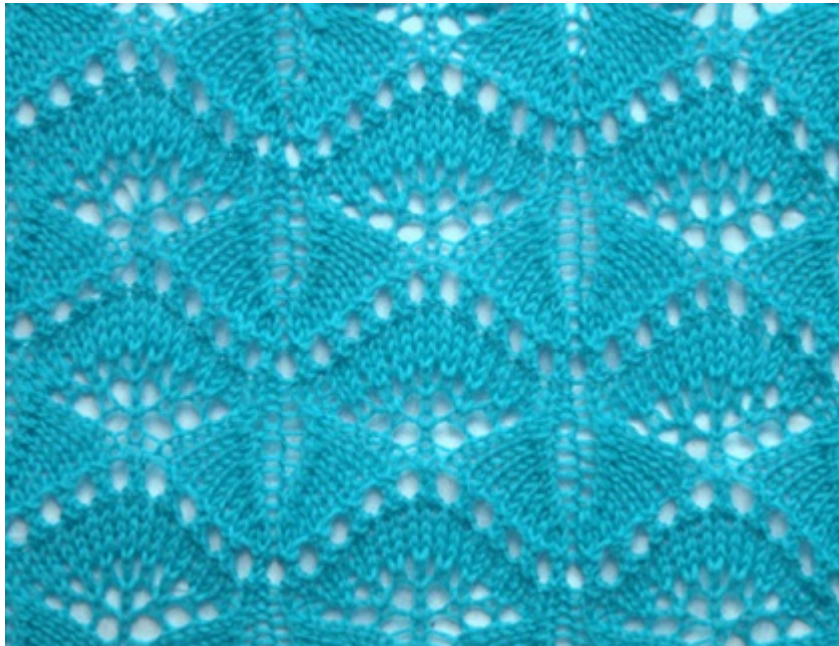



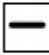




WAVY KNIT STITCH



CHART

	23	22	21	20	19	18	17	16	15	14	13	12	11	10	9	8	7	6	5	4	3	2	1	
14	—									■	■		■	■										—
	—									■	■		■	■										—
12	—	—	—	—	—	—	—	—	—	■	■	—	■	■	—	—	—	—	—	—	—	—	—	—
	—	/	○	/	○	/	○	/	○	■	■	/	■	■	○	/	○	/	○	/	○	/	○	—
10	—	—	—	—	—	—	—	—	—	■	■	—	■	■										—
	—									■	■		■	■										—
8	—									■	■		■	■										—
	—	/								■	■		■	■										/
6	—	/								■	■		■	■										/
	—	/			○		○		○	○		○	○		○		○		○		○			/
4	—	/				■	■	■		■	■		■	■		■	■	■						/
	—	/				■	■	○		○		○	○		○	■	■							/
2	—	/					■	■	○	○		○	○		■	■								/
	—	/					■	■	○	○		○	○		■	■								/
1	—	/					■	■	○	○		○	○		■	■								/
	23	22	21	20	19	18	17	16	15	14	13	12	11	10	9	8	7	6	5	4	3	2	1	

Key	
	Knit k (RS) Knit (WS) Purl
	Knit 2 Together k2tog (RS) Knit 2 stitches together (WS) Purl 2 Together
	No Stitch ns (RS) No Stitch (WS) No Stitch
	Purl p (RS) Purl (WS) Knit
	Slip Slip Knit ssk (RS) slip, slip, knit slipped sts together (WS) slip, slip, purl slipped sts together
	Yarn Over yo (RS) Yarn Over (WS) Yarn Over