

Relief Knit Pattern



Cast on 16 stitches + 2 selv sts and work according to chart.

The chart shows only RS rows.

On WS rows, work all sts as they appear.

The pat rep = 14 sts.

Begin with 1 selv st, work patt rep throughout, end with sts after patt rep and 1 selv st.

Work rows 1-18 once (or rows 1-10), then rep rows 3-18 (or rows 3-10) throughout.

Row 1: p2, k12, p2

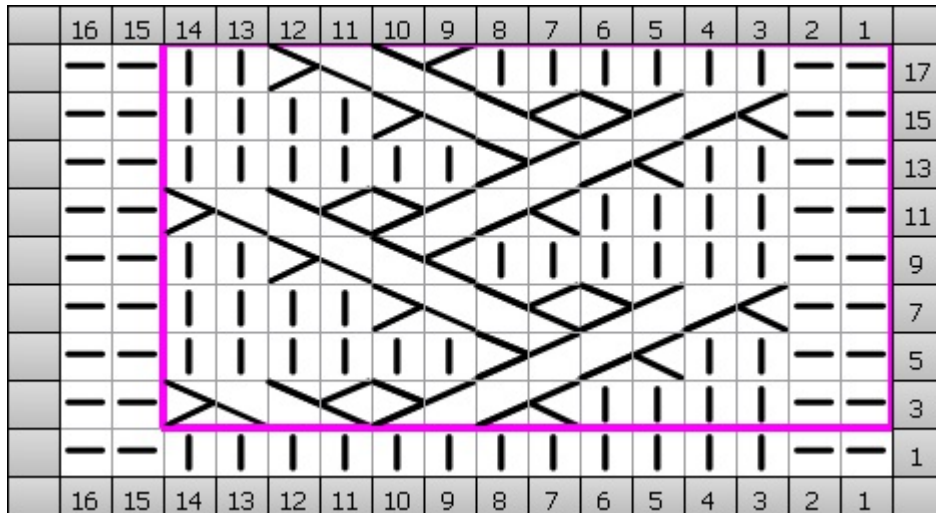
Row 3: p2, k4, c4b, c4f, p2

Row 5: p2, k2, c4b, k6, p2

Row 7: p2, c4b, c4f, k4, p2

Row 9: p2, k6, c4f, k2, p2
 Row 11: p2, k4, c4b, c4f, p2
 Row 13: p2, k2, c4b, k6, p2
 Row 15: p2, c4b, c4f, k4, p2
 Row 17: p2, k6, c4f, k2, p2

Chart



Key	
	Cable 4 Back c4b (RS) Sl 2 to back, k2, k2 sts from cn
	Cable 4 Front c4f (RS) Sl 2 to front, k2, k2 sts from cn
	Knit k (RS) Knit
	Purl p (RS) Purl