

## Leaves Knit Pattern



Cast on 46 stitches + 2 selv sts and work according to chart.

RS rows and WS rows are shown.

Read RS rows from right to left, WS rows from left to right.

RS rows and WS rows are shown with RS of work facing.

The pat rep = 23 sts.

Work between selv sts and rep patt, chart does not show selv sts.

Repeat rows 1- 20 throughout.

Row 1 (rs): k6, p2tog, p2, k1, yo, k1, yo, k1, p2, p2tog, k12, p2tog, p2, k1, yo, k1, yo, k1, p2, p2tog, k6

Row 2 (ws): p6, k3, p5, k3, p12, k3, p5, k3, p6

Row 3 (rs): k5, p2tog, p2, k2, yo, k1, yo, k2, p2, p2tog, k10, p2tog, p2, k2, yo, k1, yo, k2, p2, p2tog, k5

Row 4 (ws): p5, k3, p7, k3, p10, k3, p7, k3, p5

Row 5 (rs): k4, p2tog, p2, k3, yo, k1, yo, k3, p2, p2tog, k8, p2tog, p2, k3, yo, k1, yo, k3, p2, p2tog, k4

Row 6 (ws): p4, k3, p9, k3, p8, k3, p9, k3, p4

Row 7 (rs): k3, p2tog, p2, k4, yo, k1, yo, k4, p2, p2tog, k6, p2tog, p2, k4, yo, k1, yo, k4, p2, p2tog, k3

Row 8 (ws): p3, k3, p11, k3, p6, k3, p11, k3, p3

Row 9 (rs): k2, p2tog, p2, k5, yo, k1, yo, k5, p2, p2tog, k4, p2tog, p2, k5, yo, k1, yo, k5, p2, p2tog,

k2

Row 10 (ws): p2, k3, p13, k3, p4, k3, p13, k3, p2

Row 11 (rs): k2, yo, p3, k5, cdd, k5, p3, yo, k4, yo, p3, k5, cdd, k5, p3, yo, k2

Row 12 (ws): p3, k3, p11, k3, p6, k3, p11, k3, p3

Row 13 (rs): k3, yo, p3, k4, cdd, k4, p3, yo, k6, yo, p3, k4, cdd, k4, p3, yo, k3

Row 14 (ws): p4, k3, p9, k3, p8, k3, p9, k3, p4

Row 15 (rs): k4, yo, p3, k3, cdd, k3, p3, yo, k8, yo, p3, k3, cdd, k3, p3, yo, k4

Row 16 (ws): p5, k3, p7, k3, p10, k3, p7, k3, p5

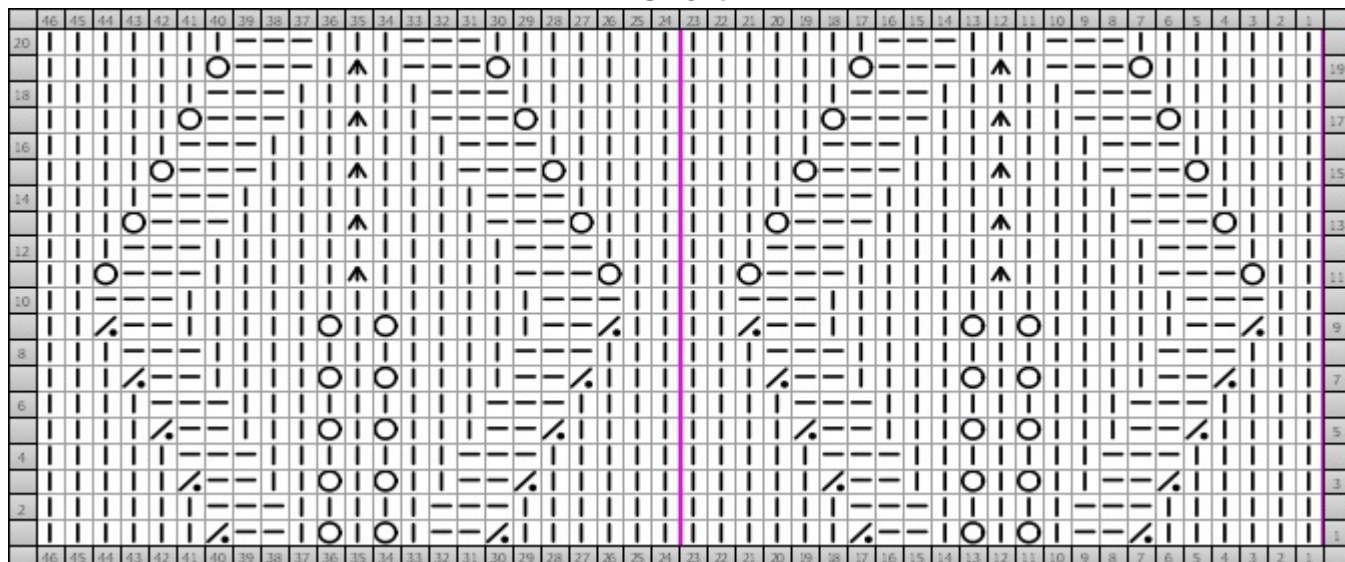
Row 17 (rs): k5, yo, p3, k2, cdd, k2, p3, yo, k10, yo, p3, k2, cdd, k2, p3, yo, k5

Row 18 (ws): p6, k3, p5, k3, p12, k3, p5, k3, p6

Row 19 (rs): k6, yo, p3, k1, cdd, k1, p3, yo, k12, yo, p3, k1, cdd, k1, p3, yo, k6

Row 20 (ws): p7, k3, p3, k3, p14, k3, p3, k3, p7

### Chart



## Key



Central Double Decrease  
cdd

(RS) slip 2 sts, knit 1, pass 2 slip sts over  
(WS) slip 2 sts together, purl next st, pass 2 slip stitches over



Knit  
k

(RS) Knit  
(WS) Purl



Purl  
p

(RS) Purl  
(WS) Knit



Purl 2 Together  
p2tog

(RS) Purl 2 Together  
(WS) Knit 2 stitches together



Yarn Over  
yo

(RS) Yarn Over  
(WS) Yarn Over