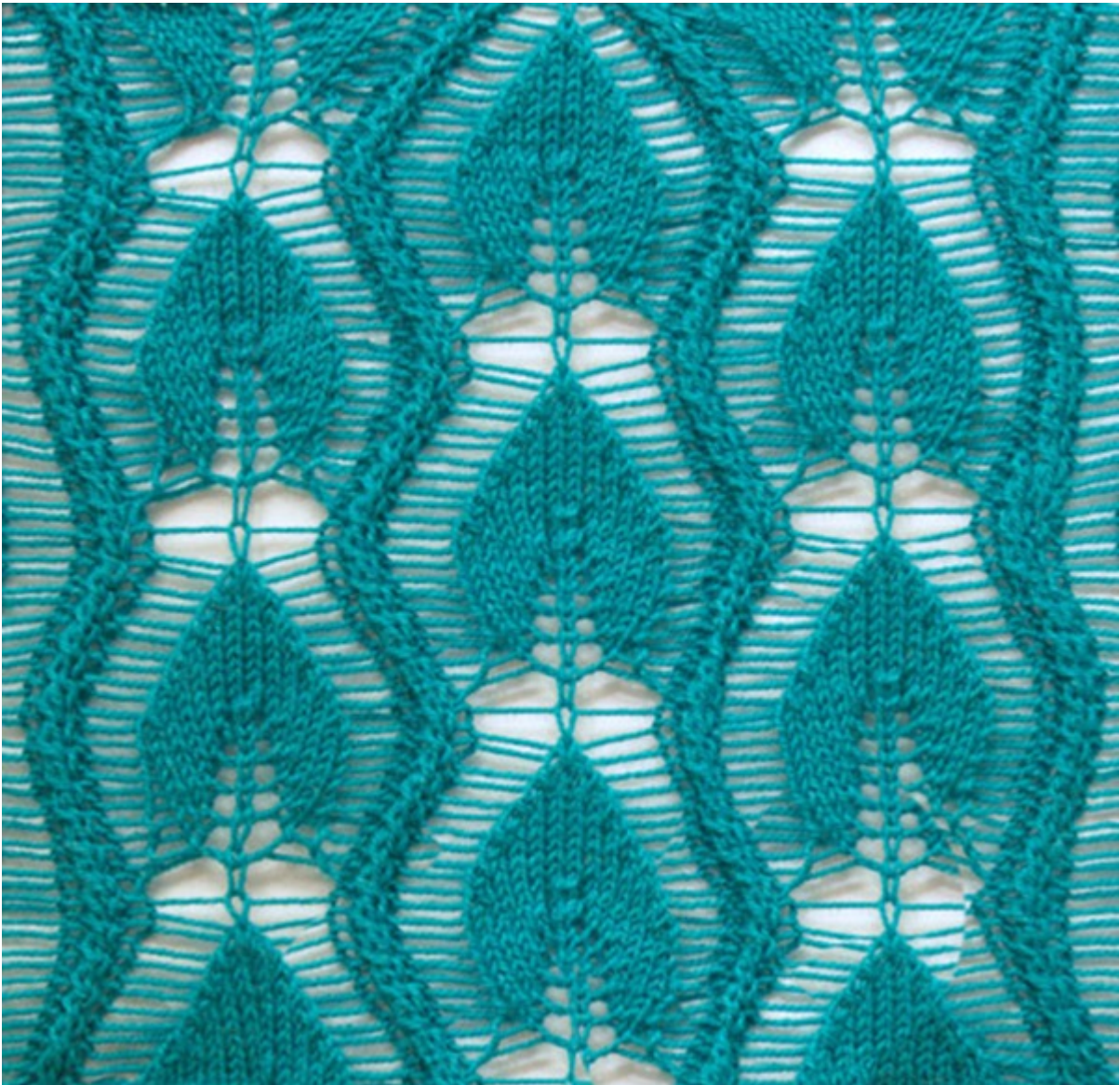
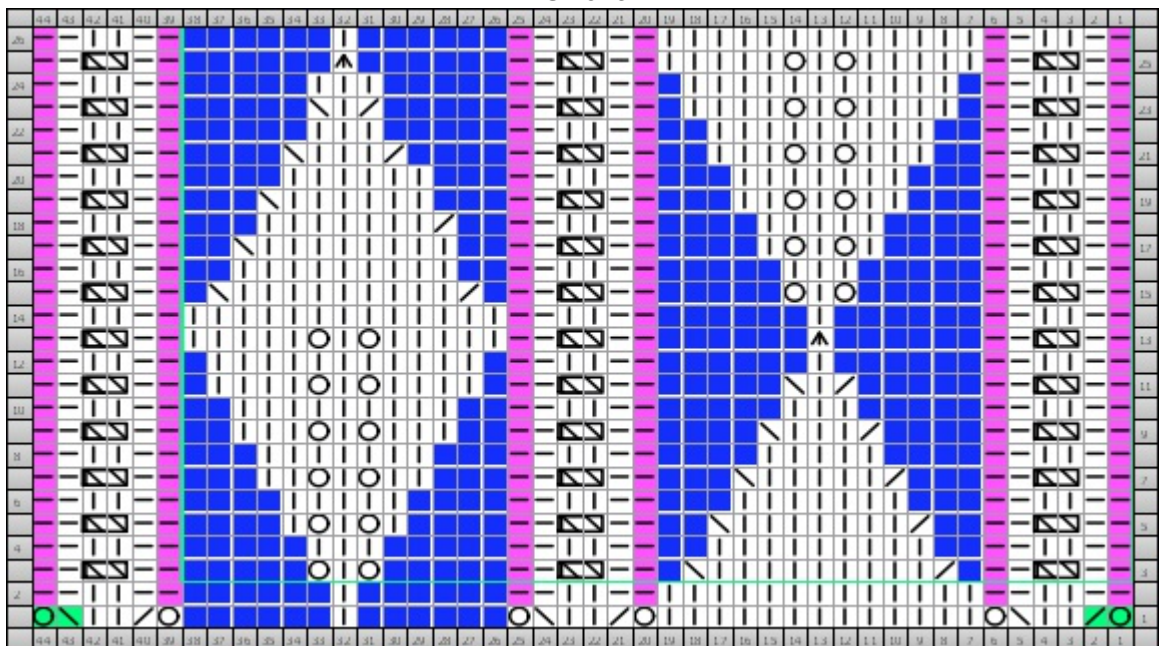


Leaf Knitting Pattern





Chart



Cast on 44 stitches + 2 selv sts and work according to chart.

RS rows and WS rows are shown.

Read RS rows from right to left, WS rows from left to right.

Work the sts as they are shown with RS of work facing.

The rep pat = 38 sts.

Beg with 1 selv st, work patt rep throughout, end with sts after patt rep and 1 selv st.

Work rows 1-26 once, then rep rows 3-26 throughout.

When working the first and last rapport, work purl sts marked in green.

When binding off, unravel sts marked in pink to the very bottom of the pattern (up to yo's the 1st row).

Row 1 (rs): yo, k2tog, k2, ssk, yo, k13, yo, k2tog, k2, ssk, yo, ns6, k1, ns6, yo, k2tog, k2, ssk, yo
Row 2 (ws): k2, p2, k2, ns6, p1, ns6, k2, p2, k2, p13, k2, p2, k2
Row 3 (rs): p2, 11lc, p2, ns, k2tog, k9, ssk, ns, p2, 11lc, p2, ns5, yo, k1, yo, ns5, p2, 11lc, p2
Row 4 (ws): k2, p2, k2, ns5, p3, ns5, k2, p2, k2, ns2, p9, ns2, k2, p2, k2
Row 5 (rs): p2, 11lc, p2, ns2, k2tog, k7, ssk, ns2, p2, 11lc, p2, ns4, k1, yo, k1, yo, k1, ns4, p2, 11lc, p2
Row 6 (ws): k2, p2, k2, ns4, p5, ns4, k2, p2, k2, ns3, p7, ns3, k2, p2, k2
Row 7 (rs): p2, 11lc, p2, ns3, k2tog, k5, ssk, ns3, p2, 11lc, p2, ns3, k2, yo, k1, yo, k2, ns3, p2, 11lc, p2
Row 8 (ws): k2, p2, k2, ns3, p7, ns3, k2, p2, k2, ns4, p5, ns4, k2, p2, k2
Row 9 (rs): p2, 11lc, p2, ns4, k2tog, k3, ssk, ns4, p2, 11lc, p2, ns2, k3, yo, k1, yo, k3, ns2, p2, 11lc, p2
Row 10 (ws): k2, p2, k2, ns2, p9, ns2, k2, p2, k2, ns5, p3, ns5, k2, p2, k2
Row 11 (rs): p2, 11lc, p2, ns5, k2tog, k1, ssk, ns5, p2, 11lc, p2, ns, k4, yo, k1, yo, k4, ns, p2, 11lc, p2
Row 12 (ws): k2, p2, k2, ns, p11, ns, k2, p2, k2, ns6, p1, ns6, k2, p2, k2
Row 13 (rs): p2, 11lc, p2, ns6, cdd, ns6, p2, 11lc, p2, k5, yo, k1, yo, k5, p2, 11lc, p2
Row 14 (ws): k2, p2, k2, p13, k2, p2, k2, ns6, p1, ns6, k2, p2, k2
Row 15 (rs): p2, 11lc, p2, ns5, yo, k1, yo, ns5, p2, 11lc, p2, ns, k2tog, k9, ssk, ns, p2, 11lc, p2
Row 16 (ws): k2, p2, k2, ns2, p9, ns2, k2, p2, k2, ns5, p3, ns5, k2, p2, k2
Row 17 (rs): p2, 11lc, p2, ns4, k1, yo, k1, yo, k1, ns4, p2, 11lc, p2, ns2, k8, ssk, ns2, p2, 11lc, p2
Row 18 (ws): k2, p2, k2, ns3, p7, p2tog, ns2, k2, p2, k2, ns4, p5, ns4, k2, p2, k2
Row 19 (rs): p2, 11lc, p2, ns3, k2, yo, k1, yo, k2, ns3, p2, 11lc, p2, ns3, k6, ssk, ns3, p2, 11lc, p2
Row 20 (ws): k2, p2, k2, ns4, p6, ns3, k2, p2, k2, ns3, p7, ns3, k2, p2, k2
Row 21 (rs): p2, 11lc, p2, ns2, k3, yo, k1, yo, k3, ns2, p2, 11lc, p2, ns4, k2tog, k3, ssk, ns4, p2, 11lc, p2
Row 22 (ws): k2, p2, k2, ns5, p3, ns5, k2, p2, k2, ns2, p9, ns2, k2, p2, k2
Row 23 (rs): p2, 11lc, p2, ns, k4, yo, k1, yo, k4, ns, p2, 11lc, p2, ns5, k2tog, k1, ssk, ns5, p2, 11lc, p2
Row 24 (ws): k2, p2, k2, ns5, p3, ns5, k2, p2, k2, ns, p11, ns, k2, p2, k2
Row 25 (rs): p2, 11lc, p2, k5, yo, k1, yo, k5, p2, 11lc, p2, ns6, cdd, ns6, p2, 11lc, p2
Row 26 (ws): k2, p2, k2, ns6, p1, ns6, k2, p2, k2, p13, k2, p2, k2