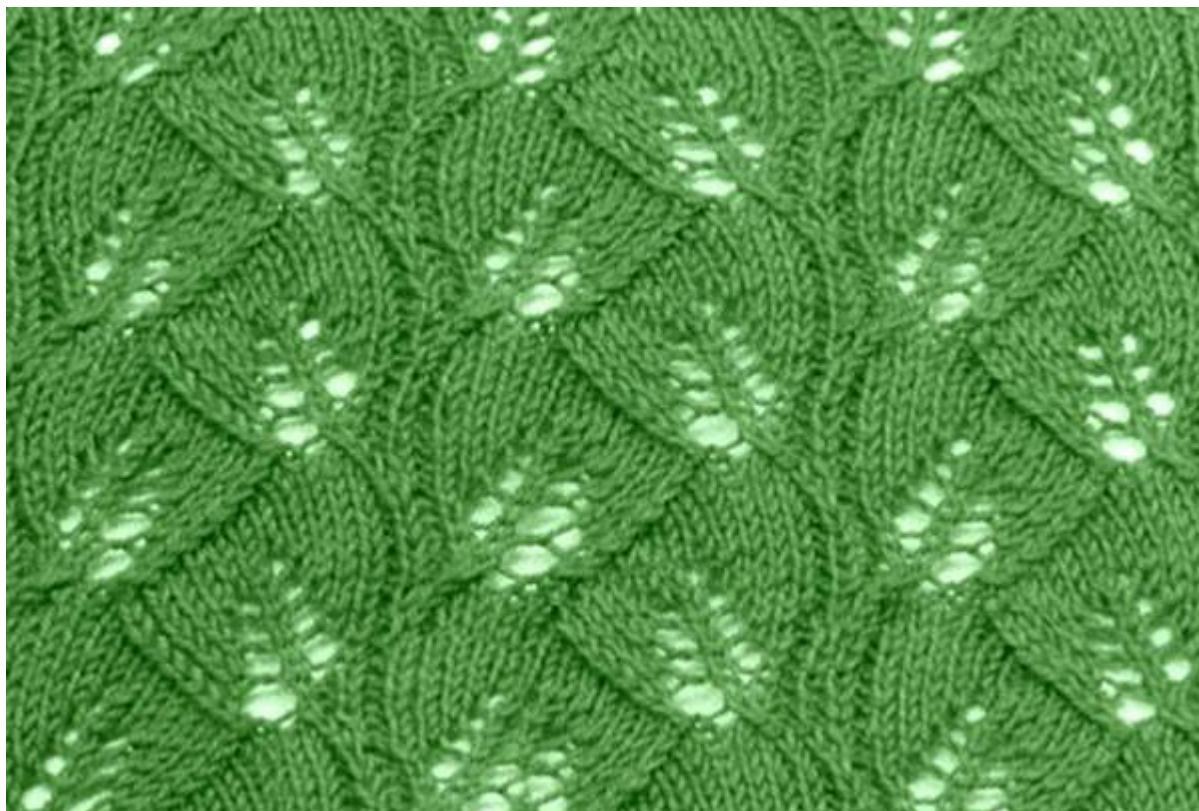


Leaf Lace Knit Stitch



Cast on 54 stitches + 2 selv sts and work according to chart.

RS rows and WS rows are shown.

Read RS rows from right to left, WS rows from left to right.

RS rows and WS rows are shown with RS of work facing.

The pat rep = 17 sts.

Begin with 1 selv st and sts before patt rep, work patt rep throughout, end with sts after patt and 1 selv st.

Work rows 1 - 24 once, then rep rows 9 - 24 throughout.

Row 1 (rs): p1, k1, p1, k10, k2tog, yo, k2, p1, k1, p1, k10, k2tog, yo, k2, p1, k1, p1, k10, k2tog, yo, k2, p1, k1, p1

Row 2 (ws): k1, p1, k1, ns, p3, p2tog, p9, k1, p1, k1, ns, p3, p2tog, p9, k1, p1, k1, ns, p3, p2tog, p9, k1, p1, k1

Row 3 (rs): p1, k1, p1, k8, k2tog, k1, yo, k1, yo, k1, p1, k1, p1, k8, k2tog, k1, yo, k1, yo, k1, p1, k1, p1, k8, k2tog, k1, yo, k1, yo, k1, p1, k1, p1

Row 4 (ws): k1, p1, k1, ns, p5, p2tog, p7, k1, p1, k1, ns, p5, p2tog, p7, k1, p1, k1, ns, p5, p2tog, p7, k1, p1, k1

Row 5 (rs): p1, m1, skp, k6, k2tog, k2, yo, k1, yo, k2, p1, m1, skp, k6, k2tog, k2, yo, k1, yo, k2, p1, m1, skp, k6, k2tog, k2, yo, k1, yo, k2, p1, k1, p1

Row 6 (ws): k1, p1, k1, ns, p7, p2tog, p5, k1, p1, k1, ns, p7, p2tog, p5, k1, p1, k1, ns, p7, p2tog, p5, k1, p1, k1

Row 7 (rs): p1, k1, m1p, skp, k3, k2tog, k3, yo, k1, yo, k3, p1, k1, m1p, skp, k3, k2tog, k3, yo, k1, yo, k3, p1, k1, m1p, skp, k3, k2tog, k3, yo, k1, yo, k3, p1, k1, p1

Row 8 (ws): k1, p1, k1, ns, p9, p2tog, p1, c2bp, k1, p1, k1, ns, p9, p2tog, p1, c2bp, k1, p1, k1, ns, p9, p2tog, p1, c2bp, k1, p1, k1

Row 9 (rs): p1, k1, p1, k2, yo, skp, k5, yo, k4, p1, k1, p1, k2, yo, skp, k5, yo, k4, p1, k1, p1, k2, yo,

skp, k5, yo, k4, p1, k1, p1

Row 10 (ws): k1, p1, k1, p9, p2tog tbl, p3, ns, k1, p1, k1, p9, p2tog tbl, p3, ns, k1, p1, k1, p9, p2tog tbl, p3, ns, k1, p1, k1

Row 11 (rs): p1, k1, p1, k1, yo, k1, yo, k1, skp, k8, p1, k1, p1, k1, yo, k1, yo, k1, skp, k8, p1, k1, p1, k1, yo, k1, yo, k1, skp, k8, p1, k1, p1

Row 12 (ws): k1, p1, k1, p7, p2tog tbl, p5, ns, k1, p1, k1, p7, p2tog tbl, p5, ns, k1, p1, k1, p7, p2tog tbl, p5, ns, k1, p1, k1

Row 13 (rs): p1, k1, p1, k2, yo, k1, yo, k2, skp, k6, k2tog, m1, p1, k2, yo, k1, yo, k2, skp, k6, k2tog, m1, p1, k2, yo, k1, yo, k2, skp, k6, k2tog, m1, p1

Row 14 (ws): k1, p1, k1, p5, p2tog tbl, p7, ns, k1, p1, k1, p5, p2tog tbl, p7, ns, k1, p1, k1, p5, p2tog tbl, p7, ns, k1, p1, k1

Row 15 (rs): p1, k1, p1, k3, yo, k1, yo, k3, skp, k3, k2tog, p1, k1, p1, k3, yo, k1, yo, k3, skp, k3, k2tog, m1p, k1, p1, k3, yo, k1, yo, k3, skp, k3, k2tog, m1p, k1, p1

Row 16 (ws): k1, p1, k1, c2b, p1, p2tog tbl, p9, ns, k1, p1, k1, c2b, p1, p2tog tbl, p9, ns, k1, p1, k1, c2b, p1, p2tog tbl, p9, ns, k1, p1, k1

Row 17 (rs): p1, k1, p1, k4, yo, k5, k2tog, yo, k2, p1, k1, p1, k4, yo, k5, k2tog, yo, k2, p1, k1, p1, k4, yo, k5, k2tog, yo, k2, p1, k1, p1

Row 18 (ws): k1, p1, k1, ns, p3, p2tog, p9, k1, p1, k1, p4, p2tog, p9, k1, p1, k1, p4, p2tog, p9, k1, p1, k1

Row 19 (rs): p1, k1, p1, k8, k2tog, k1, yo, k1, yo, k1, p1, k1, p1, k8, k2tog, k1, yo, k1, yo, k1, p1, k1, p1, k8, k2tog, k1, yo, k1, yo, k1, p1, k1, p1

Row 20 (ws): k1, p1, k1, ns, p5, p2tog, p7, k1, p1, k1, p6, p2tog, p7, k1, p1, k1, p6, p2tog, p7, k1, p1, k1

Row 21 (rs): p1, m1, skp, k6, k2tog, k2, yo, k1, yo, k2, p1, k1, p1, k6, k2tog, k2, yo, k1, yo, k2, p1, m1, skp, k6, k2tog, k2, yo, k1, yo, k2, p1, k1, p1

Row 22 (ws): k1, p1, k1, ns, p7, p2tog, p5, k1, p1, k1, p8, p2tog, p5, k1, p1, k1, p8, p2tog, p5, k1, p1, k1

Row 23 (rs): p1, k1, m1p, skp, k3, k2tog, k3, yo, k1, yo, k3, p1, k1, p1, k4, k2tog, k3, yo, k1, yo, k3, p1, k1, m1p, skp, k3, k2tog, k3, yo, k1, yo, k3, p1, k1, p1

Row 24 (ws): k1, p1, k1, ns, p9, p2tog, p1, c2bp, k1, p1, k1, p10, p2tog, p3, k1, p1, k1, p10, p2tog, p1, c2bp, k1, p1, k1

Key



Cable 2 Back
c2b

(RS) Sl 1 to back, k1, k st from cn
(WS) Sl 1 to back, k1, k st from cn



Cable 2 Front
c2f

(RS) Sl 1 to front, k1, k st from cn
(WS) Sl 1 to back, p1, p st from cn



Knit
k

(RS) Knit
(WS) Purl



Knit 2 Together
k2tog

(RS) Knit 2 stitches together
(WS) Purl 2 Together



Make One Knitwise
m1

(RS) Make one by lifting strand in between stitch just worked and the next stitch, knit into back of this thread
(WS) Make one by lifting strand in between stitch just worked and the next stitch, knit into back of this thread



Make One Purlwise
m1p

(RS) Make one by lifting strand in between stitch just worked and the next stitch, knit into back of this thread
(WS) Make one by lifting strand in between stitch just worked and the next stitch, knit into back of this thread



No Stitch
nst

(RS) No Stitch
(WS) Knit



Purl
p

(RS) Purl
(WS) Knit



SKP
skp

(RS) Slip 1, knit 1, pass slipped stitch over
(WS) Purl 2 Together Thru back loop



Yarn Over
yo

(RS) Yarn Over
(WS) Yarn Over

