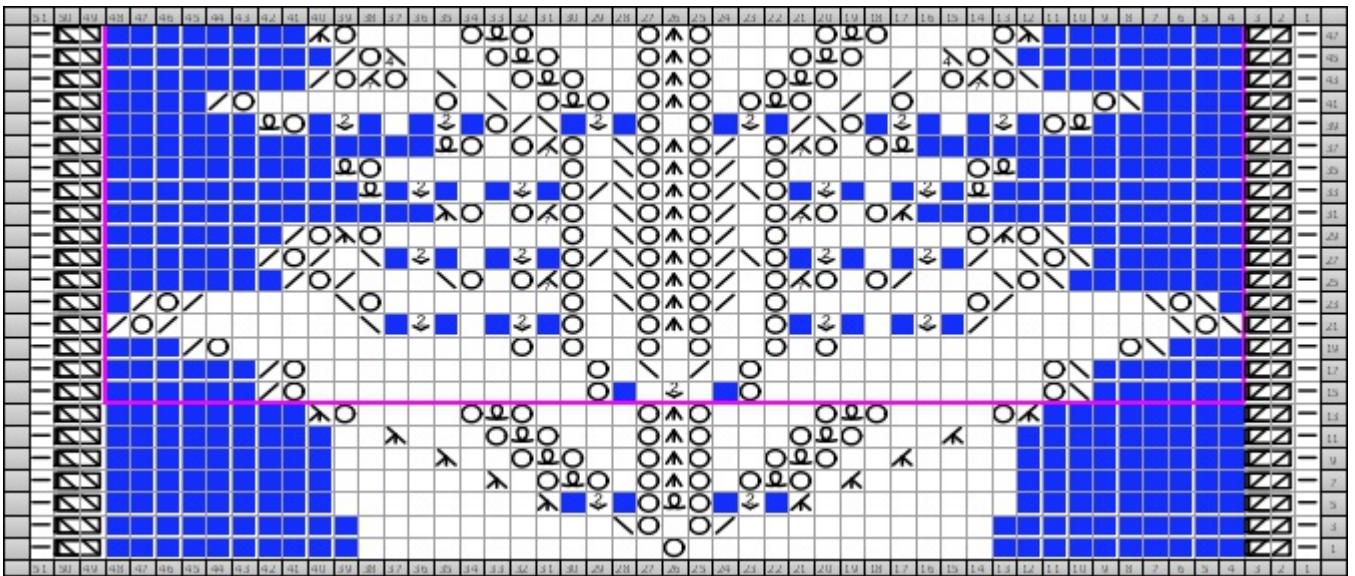


Lily of the Valley



Chart



Key



1/1 Left Cross
11lc

(RS) Sl 1 to front, k1, k st from cn



Knit 3 Together
k3tog

(RS) Knit 3 stitches together



1/1 Right Cross
11rc

(RS) Sl 1 to back, k1, k st from cn



Knit 3 Together Thru the Back Loop
k3tog tbl

(RS) knit 3 stitches together through back loop



Central Double Decrease
cdd

(RS) slip 2 sts, knit 1, pass 2 slip sts over



Knit 7 Together
k7tog

(RS) Knit 7 stitches together



Decrease 4-to-1 (left-slanting)
dec4l

(RS) Decrease 4-to-1 (left-slanting)



No Stitch
ns

(RS) No Stitch



Make 2 sts from on stitch
i3

(RS) Make 2 stitches from one stitch: K1, P1



Purl
p

(RS) Purl



Knit
k

(RS) Knit



Slip Slip Knit
ssk

(RS) slip, slip, knit slipped sts together



K1 tbl
k1 tbl

(RS) K1 tbl



Yarn Over
yo

(RS) Yarn Over



Knit 2 Together
k2tog

(RS) Knit 2 stitches together