

Lace Knit Stitch Pattern



Cast on 20 stitches + + 2 selv sts and work according to chart.

The chart shows only RS rows.

On WS rows, work all sts and yos P.

The pat rep = 12 sts.

Begin with 1 selv st and sts before patt rep, work patt rep throughout, end with sts after patt and 1 selv st.

Repeat rows 1- 20 throughout.

Row 1: k4, k2tog, yo, k1, yo, skp, k7, k2tog, yo, k2

Row 3: k3, k2tog, yo, k1, yo, skp, yo, skp, k5, k2tog, yo, k1, yo, skp

Row 5: k2, k2tog, yo, k1, yo, skp, yo, skp, yo, skp, k3, k2tog, yo, k1, yo, skp, k1

Row 7: k1, k2tog, yo, k1, yo, skp, yo, skp, yo, skp, yo, skp, k1, k2tog, yo, k1, yo, skp, yo, skp

Row 9: k2tog, yo, k1, yo, skp, yo, skp, yo, skp, yo, skp, yo, sk2p, yo, k1, yo, skp, yo, skp, k1

Row 11: k1, yo, skp, k7, k2tog, yo, k1, yo, skp, k5

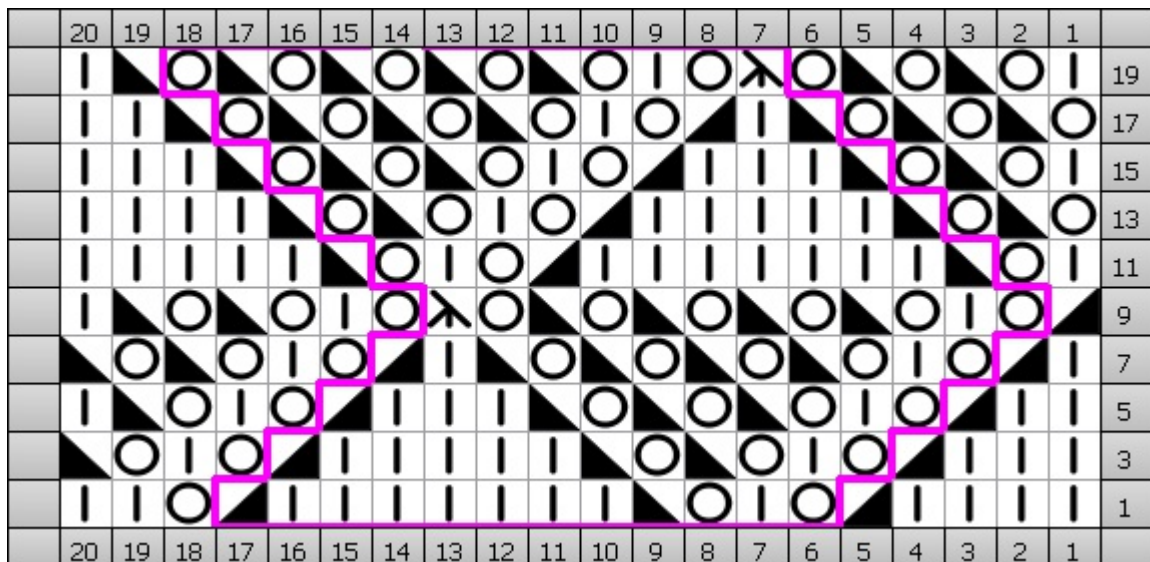
Row 13: yo, skp, yo, skp, k5, k2tog, yo, k1, yo, skp, yo, skp, k4






Row 15: k1, yo, skp, yo, skp, k3, k2tog, yo, k1, yo, skp, yo, skp, yo, skp, k3

Row 17: yo, skp, yo, skp, yo, skp, k1, k2tog, yo, k1, yo, skp, yo, skp, yo, skp, yo, skp, k2

Row 19: k1, yo, skp, yo, skp, yo, sk2p, yo, k1, yo, skp, yo, skp, yo, skp, yo, skp, yo, skp, k1

Chart



Key	
	Knit k (RS) Knit
	Knit 2 Together k2tog (RS) Knit 2 stitches together
	SK2P sk2p (RS) slip 1 st, k2tog, pass slipped stitch over
	SKP skp (RS) slip 1 kwise, K1, pass slipped stitch over
	Yarn Over yo (RS) Yarn Over