

## Lace Knit Stitch Pattern



Cast on 33 stitches + 2 selv sts and work according to chart.

RS rows and WS rows are shown.

Read RS rows from right to left, WS rows from left to right.

RS rows and WS rows are shown with RS of work facing.

The pat rep = 16 sts.

Begin with 1 selv st and sts before patt rep, work patt rep throughout, end with sts after patt and 1 selv st.

Repeat rows 1- 20 throughout.

Row 1 (rs): k1, k2tog, yo, p3, wrap5, p3, yo, skp, k1, k2tog, yo, p3, wrap5, p3, yo, skp, k1

Row 2 (ws): p2, k4, p2, k1, p2, k4, p3, k4, p2, k1, p2, k4, p2

Row 3 (rs): k2tog, yo, p4, k2tog, yo, k1, yo, skp, p4, yo, k3tog\_tbl, yo, p4, k2tog, yo, k1, yo, skp, p4, yo, skp

Row 4 (ws): p1, k5, p5, k5, p1, k5, p5, k5, p1

Row 5 (rs): k5, k2tog, yo, k3, yo, skp, p9, k2tog, yo, k3, yo, skp, p5

Row 6 (ws): k5, p7, k9, p12

Row 7 (rs): k4, k2tog, yo, k1, yo, k3tog, yo, k1, yo, skp, p7, k2tog, yo, k1, yo, k3tog, yo, k1, yo, skp, p4

Row 8 (ws): k4, p9, k7, p13

Row 9 (rs): k3, k2tog, yo, k3, p1, k3, yo, skp, p5, k2tog, yo, k3, p1, k3, yo, skp, p3

Row 10 (ws): k3, p5, k1, p5, k5, p5, k1, p8

Row 11 (rs): k2, k2tog, yo, k1, yo, k3tog, yo, p1, yo, k3tog\_tbl, yo, k1, yo, skp, p3, k2tog, yo, k1, yo, k3tog, yo, p1, yo, k3tog\_tbl, yo, k1, yo, skp, p2

Row 12 (ws): k2, p6, k1, p6, k3, p6, k1, p8

Row 13 (rs): k1, k2tog, yo, k2, k2tog, yo, k1, p1, k1, yo, skp, k2, yo, skp, p1, k2tog, yo, k2, k2tog, yo, k1, p1, k1, yo, skp, k2, yo, skp, p1

Row 14 (ws): k1, p7, k1, p7, k1, p7, k1, p8

Row 15 (rs): k2tog, yo, k1, yo, k3tog, yo, k2, p1, k2, yo, k3tog\_tbl, k2, yo, k3tog\_tbl, yo, k2, k3tog,

yo, k2, p1, k2, yo, k3tog\_tbl, yo, k1, yo, skp

Row 16 (ws): p5, k1, p2, k1, p12, k1, p2, k1, p2, k1, p5

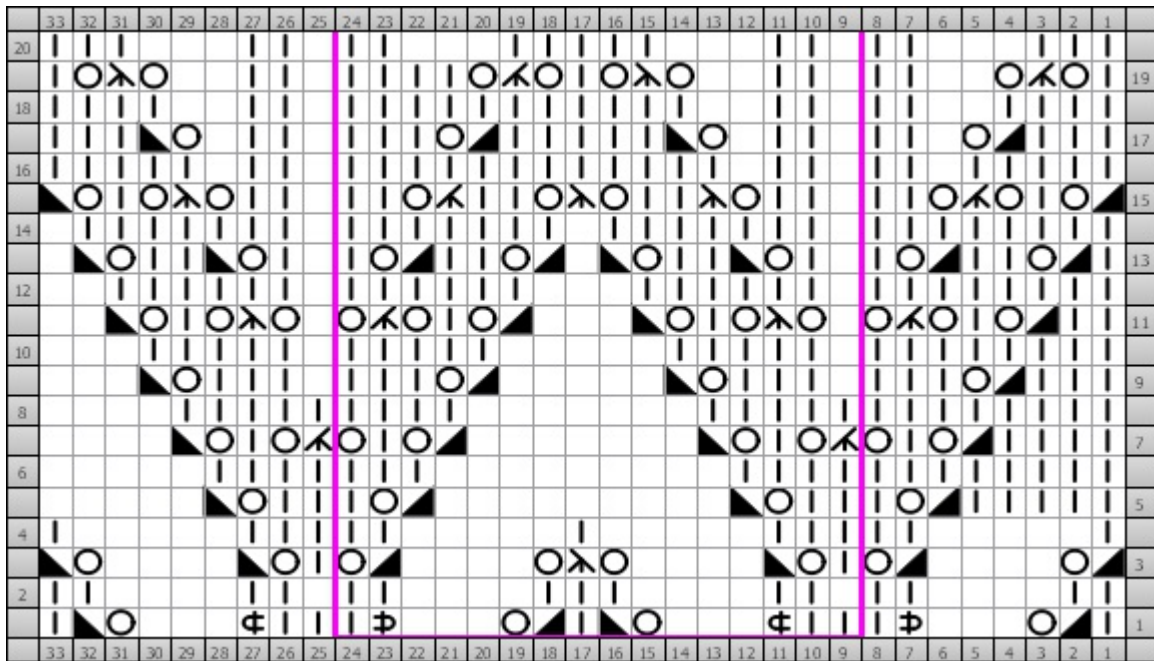
Row 17 (rs): k3, k2tog, yo, p1, k2, p1, k2, p1, yo, skp, k5, k2tog, yo, k3, p1, k2, p1, yo, skp, k3









Row 18 (ws): p4, k2, p2, k1, p11, k2, p2, k1, p2, k2, p4

Row 19 (rs): k1, yo, k3tog, yo, p2, k2, p1, k2, p2, yo, k3tog\_tbl, yo, k1, yo, k3tog, yo, k4, p1, k2, p2, yo, k3tog\_tbl, yo, k1

Row 20 (ws): p3, k3, p2, k1, p2, k3, p5, k3, p2, k1, p2, k3, p3

### Chart



Key	
	Knit k  (RS) Knit (WS) Purl
	Knit 2 Together k2tog  (RS) Knit 2 stitches together (WS) Purl 2 Together
	Knit 3 Together k3tog  (RS) Knit 3 stitches together (WS) Purl 3 Together
	Knit 3 together tbl k3tog_tbl  (RS) slip 1 st, k2tog, pass slipped stitch over (WS) Purl 2 Together Thru back loop
	Purl p  (RS) Purl (WS) Knit
	SKP skp  (RS) Slip 1, knit 1, pass slipped stitch over (WS) Purl 2 Together Thru back loop
	Wrap 5 sts wrap5  (RS) knit 5 stitches wrapping yarn three times (WS) Knit
	Yarn Over yo  (RS) Yarn Over (WS) Yarn Over