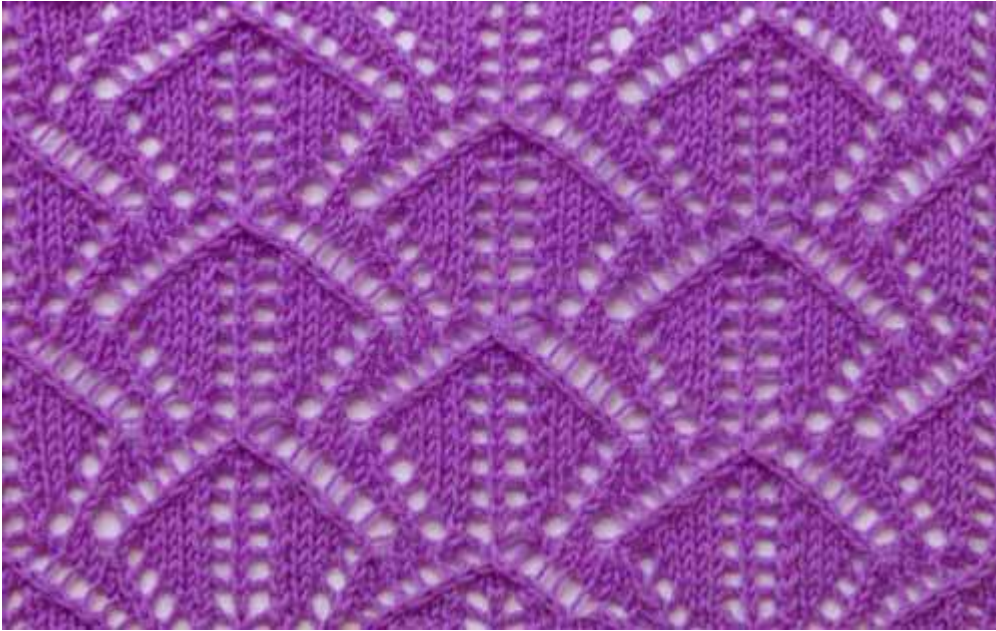


## Lace Knit Stitch Pattern



Cast on 50 stitches + 2 selv sts and work according to chart.

RS rows and WS rows are shown.

Read RS rows from right to left, WS rows from left to right.

RS rows and WS rows are shown with RS of work facing.

The pat rep = 24 sts.

Begin with 1 selv st and sts before patt rep, work patt rep throughout, end with st after patt and 1 selv st.

Repeat rows 1- 16 throughout.

Row 1 (rs): k2, yo, k2tog, k3, k2tog, yo, k2tog, yo, skp, yo, k1, yo, k2tog, yo, skp, yo, skp, k3, skp, yo, k1, yo, k2tog, k3, k2tog, yo, k2tog, yo, skp, yo, k1, yo, k2tog, yo, skp, yo, skp, k3, skp, yo, k1

Row 2 (ws): p5, p2tog tbl, yo, p11, yo, p2tog, p9, p2tog tbl, yo, p11, yo, p2tog, p6

Row 3 (rs): k2, yo, k2tog, k1, k2tog, yo, k1, k2tog, yo, k1, skp, yo, k1, yo, k2tog, k1, yo, skp, k1, yo, skp, k1, skp, yo, k1, yo, k2tog, k1, k2tog, yo, k1, k2tog, yo, k1, skp, yo, k1, yo, k2tog, k1, yo, skp, k1, yo, skp, k1, skp, yo, k1

Row 4 (ws): p3, p2tog tbl, yo, p15, yo, p2tog, p5, p2tog tbl, yo, p15, yo, p2tog, p4

Row 5 (rs): k3, k2tog, yo, k2, k2tog, yo, k2, skp, yo, k1, yo, k2tog, k2, yo, skp, k2, yo, skp, k3, k2tog, yo, k2, k2tog, yo, k2, skp, yo, k1, yo, k2tog, k2, yo, skp, k2, yo, skp, k2

Row 6 (ws): p1, p2tog tbl, yo, p19, yo, p2tog, p1, p2tog tbl, yo, p19, yo, p2tog, p2

Row 7 (rs): k1, k2tog, yo, k3, k2tog, yo, k3, skp, yo, k1, yo, k2tog, k3, yo, skp, k3, yo, k3tog\_tbl, yo, k3, k2tog, yo, k3, skp, yo, k1, yo, k2tog, k3, yo, skp, k3, yo, skp

Row 8 (ws): p50

Row 9 (rs): k2, yo, k2tog, yo, skp, yo, skp, k3, skp, yo, k1, yo, k2tog, k3, k2tog, yo, k2tog, yo, skp, yo, k1, yo, k2tog, yo, skp, yo, skp, k3, skp, yo, k1, yo, k2tog, k3, k2tog, yo, k2tog, yo, skp, yo, k1

Row 10 (ws): p6, yo, p2tog, p9, p2tog tbl, yo, p11, yo, p2tog, p9, p2tog tbl, yo, p7

Row 11 (rs): k2, yo, k2tog, k1, yo, skp, k1, yo, skp, k1, skp, yo, k1, yo, k2tog, k1, k2tog, yo, k1, k2tog, yo, k1, skp, yo, k1, yo, k2tog, k1, yo, skp, k1, yo, skp, k1, skp, yo, k1, yo, k2tog, k1, k2tog, yo, k1, k2tog, yo, k1, skp, yo, k1

Row 12 (ws): p8, yo, p2tog, p5, p2tog tbl, yo, p15, yo, p2tog, p5, p2tog tbl, yo, p9






Row 13 (rs): k2, yo, k2tog, k2, yo, skp, k2, yo, skp, k3, k2tog, yo, k2, k2tog, yo, k2, skp, yo, k1, yo, k2tog, k2, yo, skp, k2, yo, skp, k3, k2tog, yo, k2, k2tog, yo, k2, skp, yo, k1

Row 14 (ws): p10, yo, p2tog, p1, p2tog tbl, yo, p19, yo, p2tog, p1, p2tog tbl, yo, p11

Row 15 (rs): k2, yo, k2tog, k3, yo, skp, k3, yo, k3tog\_tbl, yo, k3, k2tog, yo, k3, skp, yo, k1, yo, k2tog, k3, yo, skp, k3, yo, k3tog\_tbl, yo, k3, k2tog, yo, k3, skp, yo, k1

Row 16 (ws): p50

## CHART

Key	
	Knit k  (RS) Knit (WS) Purl
	Knit 2 Together k2tog  (RS) Knit 2 stitches together (WS) Purl 2 Together
	Knit 3 together tbl k3tog_tbl  (RS) slip 1 st, k2tog, pass slipped stitch over (WS) Purl 2 Together Thru back loop
	SKP skp  (RS) Slip 1, knit 1, pass slipped stitch over (WS) Purl 2 Together Thru back loop
	Yarn Over yo  (RS) Yarn Over (WS) Yarn Over

