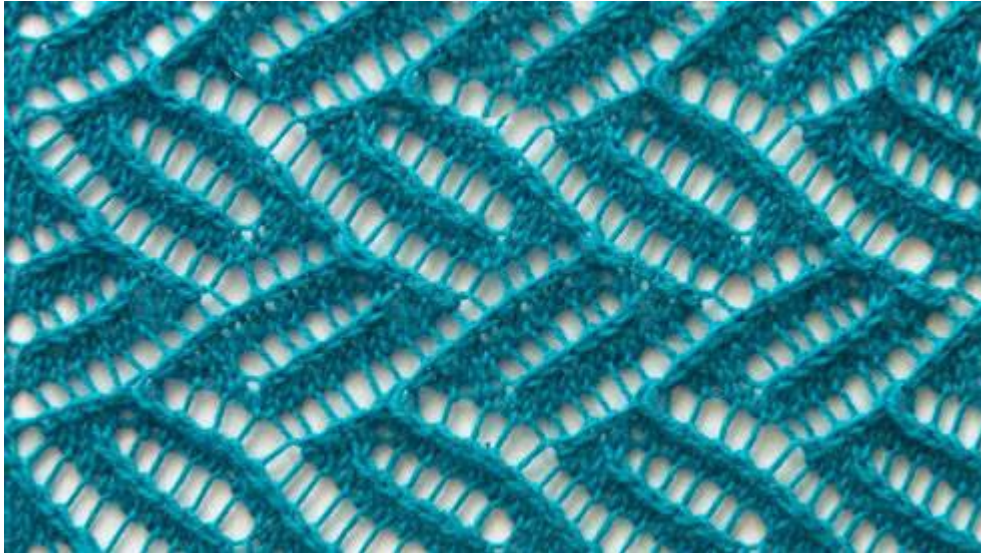


Lace Knit Stitch Pattern



Cast on 24 stitches + 2 selv sts and work according to chart.

RS rows and WS rows are shown with RS of work facing.

Read RS rows from right to left, WS rows from left to right.

The pat rep = 10 sts.

Begin with 1 selv st and sts before patt rep, work patt rep throughout, end with sts after patt and 1 selv st.

Work rows 1-22 once, then rep rows 3-22 throughout.

Row 1 (rs): k2, yo, skp, k8, yo, skp, k10

Row 2 (ws): p2, yo, p6, p2tog tbl, yo, p1, yo, p2tog, p5, p2tog tbl, yo, p3

Row 3 (rs): k4, yo, skp, k3, k2tog, yo, k3, yo, skp, k4, yo, k3

Row 4 (ws): p4, yo, p2, p2tog tbl, yo, p5, yo, p2tog, p1, p2tog tbl, yo, p5

Row 5 (rs): k6, yo, k3tog_tbl, yo, k7, yo, k3tog_tbl, yo, k5

Row 6 (ws): p5, p2tog tbl, yo, p3, p2tog tbl, yo, p3, p2tog tbl, yo, p3, p2tog tbl, yo, p2

Row 7 (rs): k3, yo, skp, k3, yo, skp, k3, yo, skp, k3, yo, skp, k4

Row 8 (ws): p3, p2tog tbl, yo, p3, p2tog tbl, yo, p3, p2tog tbl, yo, p3, p2tog tbl, yo, p4

Row 9 (rs): k5, yo, skp, k3, yo, skp, k3, yo, skp, k3, yo, skp, k2

Row 10 (ws): p1, p2tog tbl, yo, p3, p2tog tbl, yo, p3, p2tog tbl, yo, p3, p2tog tbl, yo, p6

Row 11 (rs): k2, yo, skp, k3, yo, skp, k3, yo, skp, k3, yo, skp, k5

Row 12 (ws): p2, yo, p2tog, p5, p2tog tbl, yo, p1, yo, p2tog, p5, p2tog tbl, yo, p3

Row 13 (rs): k4, yo, skp, k3, k2tog, yo, k3, yo, skp, k3, k2tog, yo, k3

Row 14 (ws): p4, yo, p2tog, p1, p2tog tbl, yo, p5, yo, p2tog, p1, p2tog tbl, yo, p5

Row 15 (rs): k6, yo, k3tog_tbl, yo, k7, yo, k3tog_tbl, yo, k5

Row 16 (ws): p6, yo, p2tog, p3, yo, p2tog, p3, yo, p2tog, p3, yo, p2tog, p1

Row 17 (rs): k5, k2tog, yo, k3, k2tog, yo, k3, k2tog, yo, k3, k2tog, yo, k2

Row 18 (ws): p3, yo, p2tog, p3, yo, p2tog, p3, yo, p2tog, p3, yo, p2tog, p4

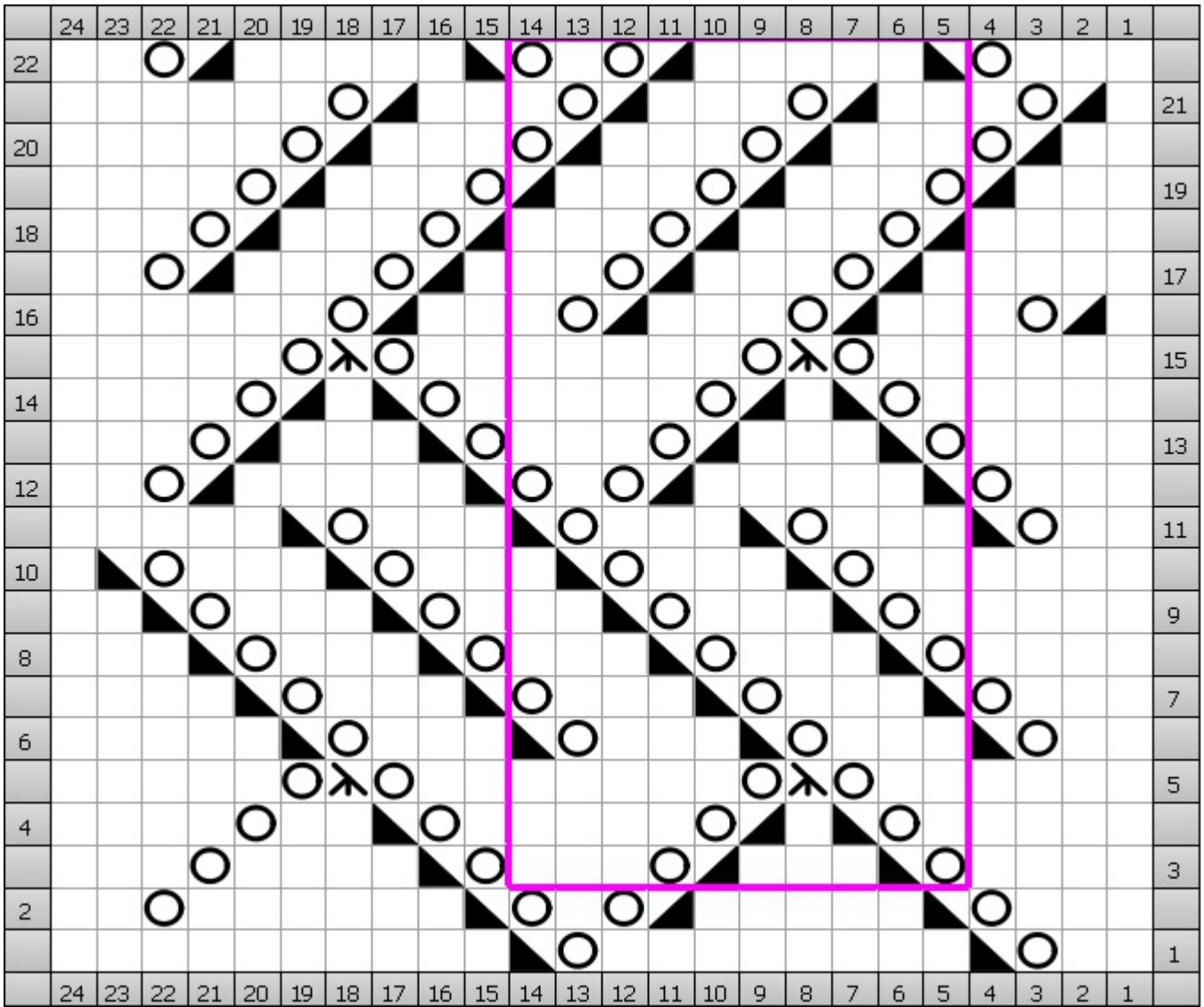
Row 19 (rs): k3, k2tog, yo, k3, k2tog, yo, k3, k2tog, yo, k3, k2tog, yo, k4






Row 20 (ws): p5, yo, p2tog, p3, yo, p2tog, p3, yo, p2tog, p3, yo, p2tog, p2

Row 21 (rs): k1, k2tog, yo, k3, k2tog, yo, k3, k2tog, yo, k3, k2tog, yo, k6

Row 22 (ws): p2, yo, p2tog, p5, p2tog tbl, yo, p1, yo, p2tog, p5, p2tog tbl, yo, p3

CHART



Key	
	Knit k (RS) Knit (WS) Purl
	Knit 2 Together k2tog (RS) Knit 2 stitches together (WS) Purl 2 Together
	Knit 3 Together Thru the Back Loop k3tog tbl (RS) knit 3 stitches together through back loop (WS) Purl 3 Together Thru back loop
	SKP skp (RS) Slip 1, knit 1, pass slipped stitch over (WS) Purl 2 Together Thru back loop
	Yarn Over yo (RS) Yarn Over (WS) Yarn Over