

Lace Stitch Pattern



Cast on 33 stitches + 2 selv sts and work according to chart.

The chart shows only RS rows.

On WS rows, work all sts as they appear; work yos P.

The rep pat = 16 sts.

Begin with 1 selv st and st before patt, rep patt, end with sts after patt and 1 selv st.

Repeat rows 1- 48 throughout.

Row 1: k2tog, yo, k2tog, yo, k2tog, yo, k2tog, yo, k1, yo, skp, yo, skp, yo, skp, yo, k3tog tbl, yo, k2tog, yo, k2tog, yo, k2tog, yo, k1, yo, skp, yo, skp, yo, skp, yo, skp

Row 3: yo, k2tog, yo, k2tog, yo, k2tog, yo, k3, yo, skp, yo, skp, yo, skp, k1, k2tog, yo, k2tog, yo, k2tog, yo, k3, yo, skp, yo, skp, yo, skp, yo

Row 5: k2tog, yo, k2tog, yo, k2tog, yo, k5, yo, skp, yo, skp, yo, k3tog tbl, yo, k2tog, yo, k2tog, yo, k5, yo, skp, yo, skp, yo, skp

Row 7: yo, k2tog, yo, k2tog, yo, k7, yo, skp, yo, skp, k1, k2tog, yo, k2tog, yo, k7, yo, skp, yo, skp, yo

Row 9: k2tog, yo, k2tog, yo, k1, yo, k2, cdd, k2, yo, k1, yo, skp, yo, k3tog tbl, yo, k2tog, yo, k1, yo, k2, cdd, k2, yo, k1, yo, skp, yo, skp

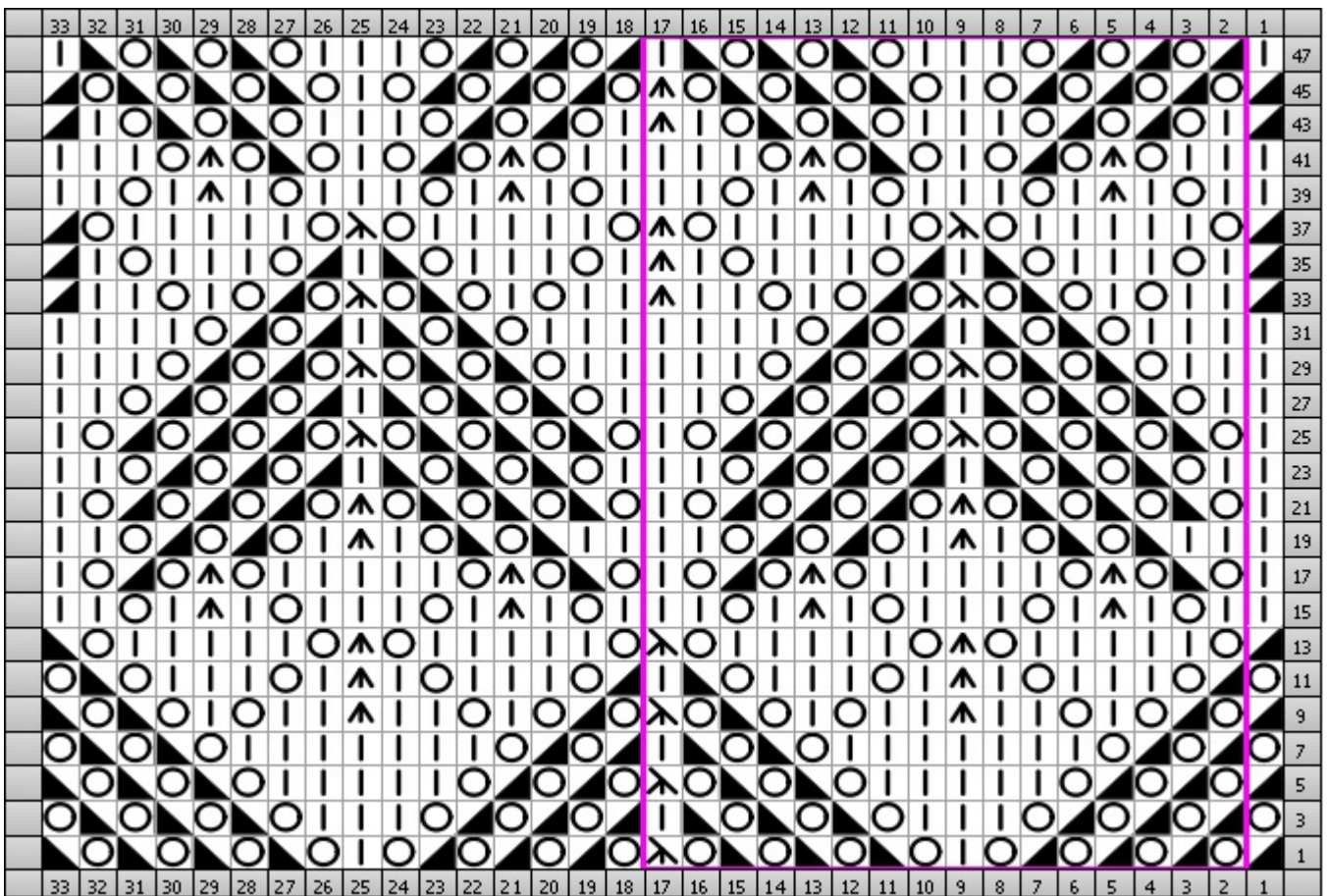
Row 11: yo, k2tog, yo, k3, yo, k1, cdd, k1, yo, k3, yo, skp, k1, k2tog, yo, k3, yo, k1, cdd, k1, yo, k3, yo, skp, yo

Row 13: k2tog, yo, k5, yo, cdd, yo, k5, yo, k3tog tbl, yo, k5, yo, cdd, yo, k5, yo, skp

Row 15: k2, yo, k1, cdd, k1, yo, k3, yo, k1, cdd, k1, yo, k3, yo, k1, cdd, k1, yo, k3, yo, k1, cdd, k1, yo,

k2
 Row 17: k1, yo, skp, yo, cdd, yo, k5, yo, cdd, yo, k2tog, yo, k1, yo, skp, yo, cdd, yo, k5, yo, cdd, yo, k2tog, yo, k1
 Row 19: k3, skp, yo, skp, yo, k1, cdd, k1, yo, k2tog, yo, k2tog, yo, k4, skp, yo, skp, yo, k1, cdd, k1, yo, k2tog, yo, k2tog, yo, k2
 Row 21: k1, yo, skp, yo, skp, yo, skp, yo, cdd, yo, k2tog, yo, k2tog, yo, k2tog, yo, k1, yo, skp, yo, skp, yo, skp, yo, cdd, yo, k2tog, yo, k2tog, yo, k2tog, yo, k1
 Row 23: k2, yo, skp, yo, skp, yo, skp, k1, k2tog, yo, k2tog, yo, k2tog, yo, k3, yo, skp, yo, skp, yo, skp, k1, k2tog, yo, k2tog, yo, k2tog, yo, k2
 Row 25: k1, yo, skp, yo, skp, yo, skp, yo, k3tog tbl, yo, k2tog, yo, k2tog, yo, k2tog, yo, k1, yo, skp, yo, skp, yo, skp, yo, k3tog tbl, yo, k2tog, yo, k2tog, yo, k2tog, yo, k1
 Row 27: k2, yo, skp, yo, skp, yo, skp, k1, k2tog, yo, k2tog, yo, k2tog, yo, k3, yo, skp, yo, skp, yo, skp, k1, k2tog, yo, k2tog, yo, k2tog, yo, k2
 Row 29: k3, yo, skp, yo, skp, yo, k3tog tbl, yo, k2tog, yo, k2tog, yo, k5, yo, skp, yo, skp, yo, k3tog tbl, yo, k2tog, yo, k2tog, yo, k3
 Row 31: k4, yo, skp, yo, skp, k1, k2tog, yo, k2tog, yo, k7, yo, skp, yo, skp, k1, k2tog, yo, k2tog, yo, k4
 Row 33: k2tog, k2, yo, k1, yo, skp, yo, k3tog tbl, yo, k2tog, yo, k1, yo, k2, cdd, k2, yo, k1, yo, skp, yo, k3tog tbl, yo, k2tog, yo, k1, yo, k2, k2tog
 Row 35: k2tog, k1, yo, k3, yo, skp, k1, k2tog, yo, k3, yo, k1, cdd, k1, yo, k3, yo, skp, k1, k2tog, yo, k3, yo, k1, k2tog
 Row 37: k2tog, yo, k5, yo, k3tog tbl, yo, k5, yo, cdd, yo, k5, yo, k3tog tbl, yo, k5, yo, k2tog
 Row 39: k2, yo, k1, cdd, k1, yo, k3, yo, k1, cdd, k1, yo, k3, yo, k1, cdd, k1, yo, k3, yo, k1, cdd, k1, yo, k2
 Row 41: k3, yo, cdd, yo, k2tog, yo, k1, yo, skp, yo, cdd, yo, k5, yo, cdd, yo, k2tog, yo, k1, yo, skp, yo, cdd, yo, k3
 Row 43: k2tog, k1, yo, k2tog, yo, k2tog, yo, k3, yo, skp, yo, skp, yo, k1, cdd, k1, yo, k2tog, yo, k2tog, yo, k3, yo, skp, yo, skp, yo, k1, k2tog
 Row 45: k2tog, yo, k2tog, yo, k2tog, yo, k2tog, yo, k1, yo, skp, yo, skp, yo, skp, yo, cdd, yo, k2tog, yo, k2tog, yo, k2tog, yo, k1, yo, skp, yo, skp, yo, skp, yo, k2tog
 Row 47: k1, k2tog, yo, k2tog, yo, k2tog, yo, k3, yo, skp, yo, skp, yo, skp, k1, k2tog, yo, k2tog, yo, k2tog, yo, k3, yo, skp, yo, skp, yo, skp, k1

Chart



Key	
	Central Double Decrease cdd (RS) slip 2 sts, knit 1, pass 2 slip sts over
	Knit k (RS) Knit
	Knit 2 Together k2tog (RS) Knit 2 stitches together
	Knit 3 Together Thru the Back Loop k3tog tbl (RS) knit 3 stitches together through back loop
	SKP skp (RS) Slip 1, knit 1, pass slipped stitch over
	Yarn Over yo (RS) Yarn Over