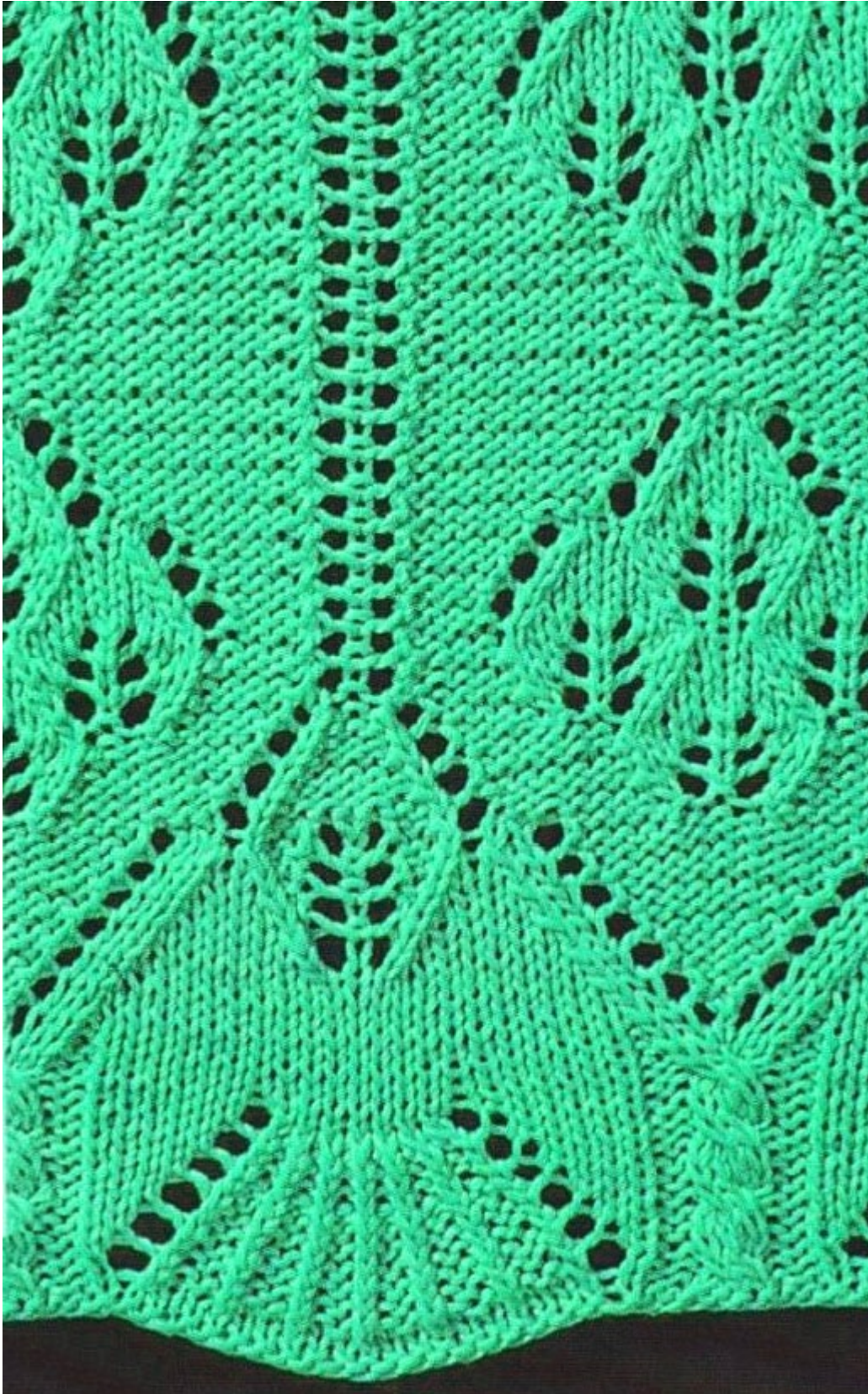


Lace Knit Stitch Pattern



Cast on 61 stitches + 2 selv sts and work according to chart.
The chart shows RS rows and 1 WS row.
On WS rows, work all sts as they appear or as given in instructions; work yos P.

Begin with 1 WS row.

The rep pat = 30 sts.

Begin with 1 selv st and sts before patt rep, work patt rep throughout, end with sts after patt and 1 selv st.

Work rows 1-17 once, then rep rows 18-69 throughout.

Row 1 (ws): p1, ns, p2, ns, p7, ns, p11, ns, p7, ns, p2, ns, p1, ns, p2, ns, p7, ns, p11, ns, p7, ns, p2, ns, p1

Row 2 (rs): k73

Row 4 (rs): p1 tbl, ns, k2, ns, p1 tbl, k2, p1 tbl, k2, p1 tbl, yo, p1, k2, t5f2, k2, p1, yo, p1 tbl, k2, p1 tbl, k2, p1 tbl, ns, k2, ns, p1 tbl, ns, k2, ns, p1 tbl, k2, p1 tbl, k2, p1 tbl, k2, p1 tbl, yo, p1, k2, t5f2, k2, p1, yo, p1 tbl, k2, p1 tbl, k2, p1 tbl, ns, k2, ns, p1 tbl

Row 6 (rs): k1 tbl, ns, p2, k1 tbl, p2, k1 tbl, p2, k1 tbl, yo, k2, p2, k5, p2, k2, yo, k1 tbl, p2, k1 tbl, p2, k1 tbl, p2, ns, k1 tbl, ns, p2, k1 tbl, p2, k1 tbl, p2, k1 tbl, yo, k2, p2, k5, p2, k2, yo, k1 tbl, p2, k1 tbl, p2, k1 tbl, p2, ns, k1 tbl

Row 8 (rs): p1 tbl, k2, p1 tbl, k2, p1 tbl, k2, p1 tbl, yo, p3, k2, t5f2, k2, p3, yo, p1 tbl, k2, p1 tbl, k2, p1 tbl, k2, p1 tbl, k2, p1 tbl, k2, p1 tbl, k2, p1 tbl, yo, p3, k2, t5f2, k2, p3, yo, p1 tbl, k2, p1 tbl, k2, p1 tbl, k2, p1 tbl

Row 10 (rs): k1 tbl, p2tog, k1 tbl, ns, p2tog, k1 tbl, ns, p2tog, k1 tbl, yo, k4, p2, k5, p2, k4, yo, k1 tbl, p2tog, ns, k1 tbl, p2tog, ns, k1 tbl, p2tog, k1 tbl, p2tog, k1 tbl, ns, p2tog, k1 tbl, ns, p2tog, k1 tbl, yo, k4, p2, k5, p2, k4, yo, k1 tbl, p2tog, ns, k1 tbl, p2tog, ns, k1 tbl, p2tog, k1 tbl

Row 12 (rs): p1 tbl, k1, p1 tbl, k1, p1 tbl, ns, k1, p1 tbl, yo, p5, k2, t5f2, k2, p5, yo, p1 tbl, ns, k1, p1 tbl, k1, p1 tbl, k1, p1 tbl, k1, p1 tbl, k1, p1 tbl, ns, k1, p1 tbl, yo, p5, k2, t5f2, k2, p5, yo, p1 tbl, ns, k1, p1 tbl, k1, p1 tbl, k1, p1 tbl

Row 14 (rs): skp, ns, skp, ns, skp, ns, k1, yo, k6, p2, k5, p2, k6, yo, skp, ns, skp, ns, skp, ns, skp, ns, skp, ns, skp, ns, k1, yo, k6, p2, k5, p2, k6, yo, skp, ns, skp, ns, skp, ns, k1

Row 16 (rs): p1, ns, p1, ns, p1, ns, p8, k2, t5f2, k2, p8, ns, p1, ns, p1, ns, p1, ns, p1, ns, p1, ns, p1, ns, p8, k2, t5f2, k2, p8, ns, p1, ns, p1, ns, p1

Row 18: k11, p1, k2tog, k1, yo, p1, yo, k1, skp, k23, k2tog, k1, yo, p1, yo, k1, skp, k12

Row 20: k11, k2tog, k1, yo, p3, yo, k1, skp, k21, k2tog, k1, yo, p3, yo, k1, skp, k11

Row 22: k10, k2tog, k1, yo, p5, yo, k1, skp, k19, k2tog, k1, yo, p5, yo, k1, skp, k10

Row 24: p1, yo, skp, k6, k2tog, k1, yo, p7, yo, k1, skp, k6, k2tog, yo, p1, yo, skp, k6, k2tog, k1, yo, p7, yo, k1, skp, k6, k2tog, yo, p1

Row 26: p1, yo, p1, skp, k4, k2tog, k1, yo, p9, yo, k1, skp, k4, k2tog, p1, yo, p1, yo, p1, skp, k4, k2tog, k1, yo, p9, yo, k1, skp, k4, k2tog, p1, yo, p1

Row 28: p1, yo, p2, skp, k2, k2tog, k1, yo, p11, yo, k1, skp, k2, k2tog, p2, yo, p1, yo, p2, skp, k2, k2tog, k1, yo, p11, yo, k1, skp, k2, k2tog, p2, yo, p1

Row 30: p1, yo, p3, skp, k2tog, k1, yo, p13, yo, k1, skp, k2tog, p3, yo, p1, yo, p3, skp, k2tog, k1, yo, p13, yo, k1, skp, k2tog, p3, yo, p1

Row 32: p4, k2tog, yo, p7, k2tog, yo, k1, yo, skp, p7, yo, skp, p7, k2tog, yo, p7, k2tog, yo, k1, yo, skp, p7, yo, skp, p4

Row 34: p3, k2tog, yo, p7, k2tog, k1, yo, k1, yo, k1, skp, p7, yo, skp, p5, k2tog, yo, p7, k2tog, k1, yo, k1, yo, k1, skp, p7, yo, skp, p3

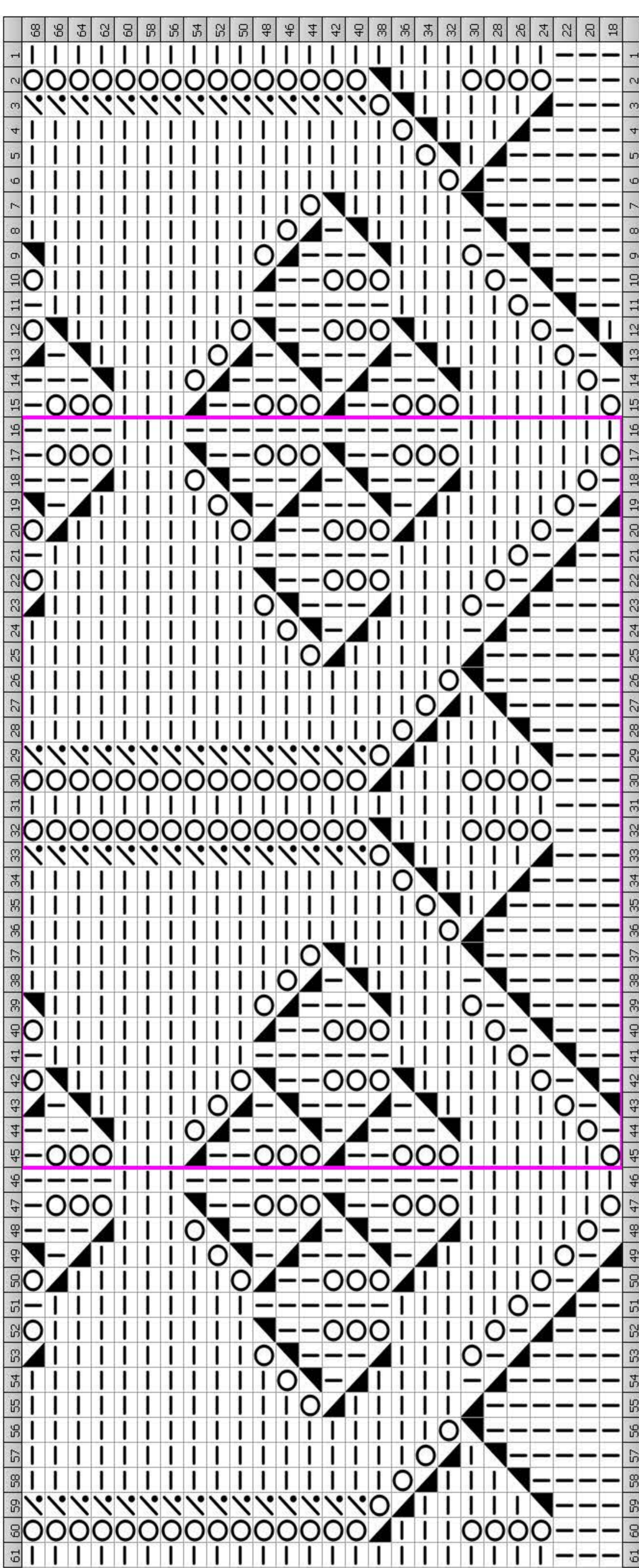
Row 36: p2, k2tog, yo, p7, k2tog, k2, yo, k1, yo, k2, skp, p7, yo, skp, p3, k2tog, yo, p7, k2tog, k2, yo, k1, yo, k2, skp, p7, yo, skp, p2


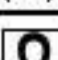







Row 38: p1, k2tog, yo, p5, k2tog, yo, k1, yo, skp, k5, k2tog, yo, k1, yo, skp, p5, yo, skp, p1, k2tog, yo, p5, k2tog, yo, k1, yo, skp, k5, k2tog, yo, k1, yo, skp, p5, yo, skp, p1

Row 40: p1, yo, p2tog, p4, k2tog, k1, yo, k1, yo, k1, skp, k3, k2tog, k1, yo, k1, yo, k1, skp, p4, p2tog, yo, p1, yo, p2tog, p4, k2tog, k1, yo, k1, yo, k1, skp, k3, k2tog, k1, yo, k1, yo, k1, skp, p4, p2tog, yo,

p1
 Row 42: p1, yo, p2tog, p3, k2tog, k2, yo, k1, yo, k2, skp, k1, k2tog, k2, yo, k1, yo, k2, skp, p3, p2tog, yo, p1, yo, p2tog, p3, k2tog, k2, yo, k1, yo, k2, skp, k1, k2tog, k2, yo, k1, yo, k2, skp, p3, p2tog, yo, p1
 Row 44: p1, yo, p2tog, p3, yo, skp, k5, k2tog, yo, k1, yo, skp, k5, k2tog, yo, p3, p2tog, yo, p1, yo, p2tog, p3, yo, skp, k5, k2tog, yo, k1, yo, skp, k5, k2tog, yo, p3, p2tog, yo, p1
 Row 46: p1, yo, p2tog, p4, yo, skp, k3, k2tog, k1, yo, k1, yo, k1, skp, k3, k2tog, yo, p4, p2tog, yo, p1, yo, p2tog, p4, yo, skp, k3, k2tog, k1, yo, k1, yo, k1, skp, k3, k2tog, yo, p4, p2tog, yo, p1
 Row 48: p1, yo, p2tog, p5, yo, skp, k1, k2tog, k2, yo, k1, yo, k2, skp, k1, k2tog, yo, p5, p2tog, yo, p1, yo, p2tog, p5, yo, skp, k1, k2tog, k2, yo, k1, yo, k2, skp, k1, k2tog, yo, p5, p2tog, yo, p1
 Row 50: p1, yo, p2tog, p8, yo, skp, k5, k2tog, yo, p8, p2tog, yo, p1, yo, p2tog, p8, yo, skp, k5, k2tog, yo, p8, p2tog, yo, p1
 Row 52: p1, yo, p2tog, p9, yo, skp, k3, k2tog, yo, p9, p2tog, yo, p1, yo, p2tog, p9, yo, skp, k3, k2tog, yo, p9, p2tog, yo, p1
 Row 54: p1, yo, p2tog, p10, yo, skp, k1, k2tog, yo, p10, p2tog, yo, p1, yo, p2tog, p10, yo, skp, k1, k2tog, yo, p10, p2tog, yo, p1
 Row 56: p1, yo, p2tog, p25, p2tog, yo, p1, yo, p2tog, p25, p2tog, yo, p1
 Row 58: p1, yo, p2tog, p25, p2tog, yo, p1, yo, p2tog, p25, p2tog, yo, p1
 Row 60: p1, yo, p2tog, p25, p2tog, yo, p1, yo, p2tog, p25, p2tog, yo, p1
 Row 62: p1, yo, p2tog, p10, k2tog, yo, k1, yo, skp, p10, p2tog, yo, p1, yo, p2tog, p10, k2tog, yo, k1, yo, skp, p10, p2tog, yo, p1
 Row 64: p1, yo, p2tog, p9, k2tog, k1, yo, k1, yo, k1, skp, p9, p2tog, yo, p1, yo, p2tog, p9, k2tog, k1, yo, k1, yo, k1, skp, p9, p2tog, yo, p1
 Row 66: p1, yo, p2tog, p8, k2tog, k2, yo, k1, yo, k2, skp, p8, p2tog, yo, p1, yo, p2tog, p8, k2tog, k2, yo, k1, yo, k2, skp, p8, p2tog, yo, p1
 Row 68: p1, yo, p2tog, p5, k2tog, yo, k1, yo, skp, k5, k2tog, yo, k1, yo, skp, p5, p2tog, yo, p1, yo, p2tog, p5, k2tog, yo, k1, yo, skp, k5, k2tog, yo, k1, yo, skp, p5, p2tog, yo, p1

Chart



Key	
	Knit k (R5) Knit
	K1 tbl k1 tbl (R5) K1 tbl
	No Stitch ns (R5) No Stitch
	Purl p (R5) Purl
	Purl 2 Together p2tog (R5) Purl 2 Together
	SKP skp (R5) Slip 1, knit 1, pass slipped stitch over
	Twist 5 Front 2 t5f2 (R5) Sl 2 to cn, hold to front, k3, k2 from cn
	Yarn Over yo (R5) Yarn Over
	Knit 2 Together k2tog (R5) Knit 2 stitches together

