

## ***Fancy Knit Stitch Pattern***



Cast on 24 stitches + 2 selv sts and work according to chart.

RS rows and WS rows are shown.

Read RS rows from right to left, WS rows from left to right.

RS rows and WS rows are shown with RS of work facing.

The pat rep = 12 sts.

Begin with 1 selv st and sts before patt rep, work patt rep throughout, end with sts after patt and 1 selv st.

Repeat rows 1- 20 throughout.

Row 1 (rs): 11rc, k8, 11lc, 11rc, k8, 11lc

Row 2 (ws): p1, 11lp, p6, 11rp, p2, 11lp, p6, 11rp, p1

Row 3 (rs): k1, p1, 11lc, k4, 11rc, p1, k2, p1, 11lc, k4, 11rc, p1, k1

Row 4 (ws): p1, k2, 11lp, p2, 11rp, k2, p2, k2, 11lp, p2, 11rp, k2, p1

Row 5 (rs): k1, p3, 11lc, 11rc, p3, k2, p3, 11lc, 11rc, p3, k1

Row 6 (ws): p1, k4, ns, p2tog, k4, p2, k4, ns, p2tog, k4, p1

Row 7 (rs): 11lc, p3, k1, nst, p3, 11rc, 11lc, p3, k1, nst, p3, 11rc

Row 8 (ws): p1, 11lp, k2, ns, p1, k2, 11rp, p2, 11lp, k2, ns, p1, k2, 11rp, p1

Row 9 (rs): k2, 11lc, p1, k1, nst, p1, 11rc, k4, 11lc, p1, k1, nst, p1, 11rc, k2

Row 10 (ws): p3, 11lp, ns, m1, 11rp, p6, 11lp, ns, m1, 11rp, p3

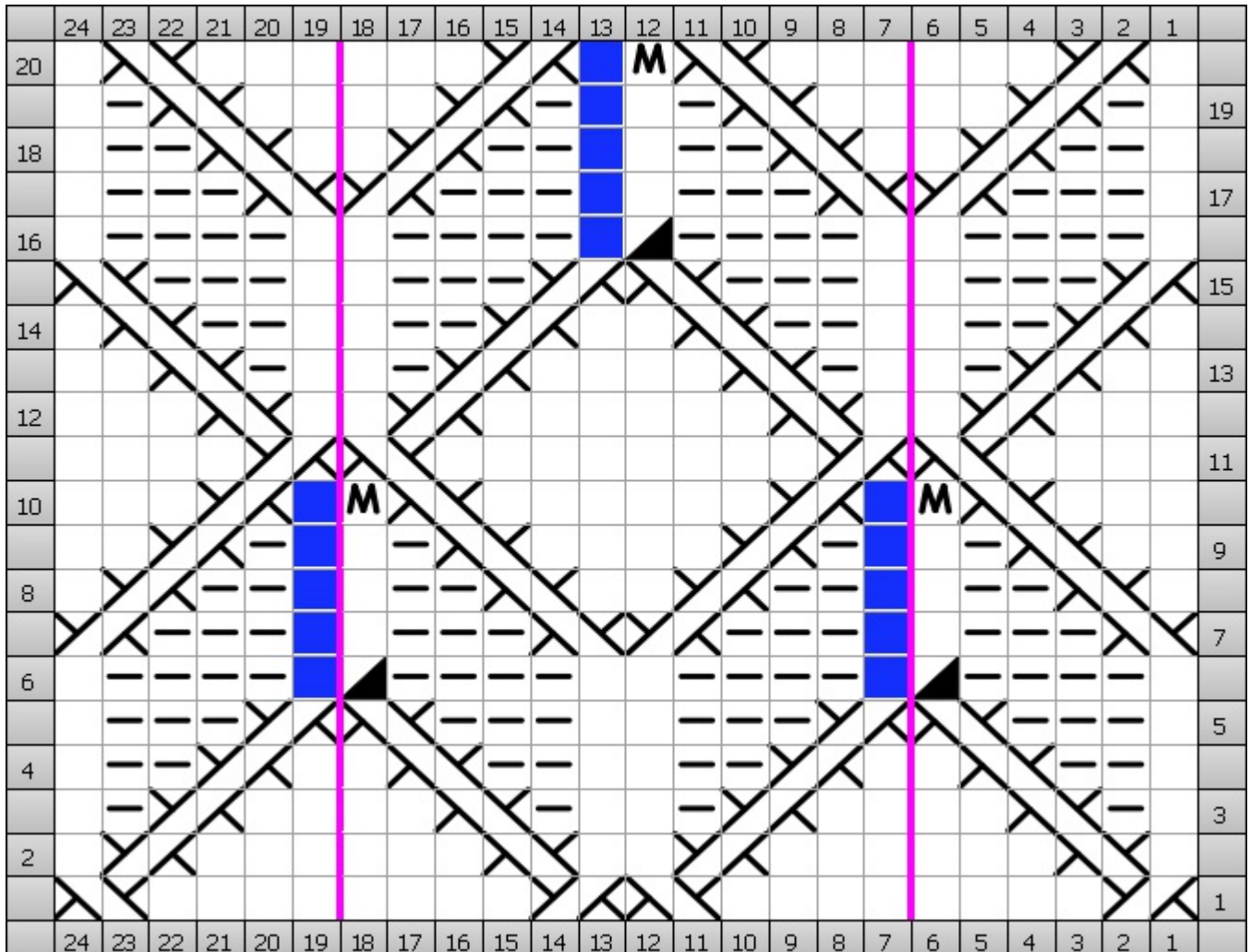
Row 11 (rs): k4, 11lc, 11rc, k8, 11lc, 11rc, k4








Row 12 (ws): p3, 11rp, p2, 11lp, p6, 11rp, p2, 11lp, p3

Row 13 (rs): k2, 11rc, p1, k2, p1, 11lc, k4, 11rc, p1, k2, p1, 11lc, k2

Row 14 (ws): p1, 11rp, k2, p2, k2, 11lp, p2, 11rp, k2, p2, k2, 11lp, p1  
 Row 15 (rs): 11rc, p3, k2, p3, 11lc, 11rc, p3, k2, p3, 11lc  
 Row 16 (ws): p1, k4, p2, k4, ns, p2tog, k4, p2, k4, p1  
 Row 17 (rs): k1, p3, 11rc, 11lc, p3, k1, nst, p3, 11rc, 11lc, p3, k1  
 Row 18 (ws): p1, k2, 11rp, p2, 11lp, k2, ns, p1, k2, 11rp, p2, 11lp, k2, p1  
 Row 19 (rs): k1, p1, 11rc, k4, 11lc, p1, k1, nst, p1, 11rc, k4, 11lc, p1, k1  
 Row 20 (ws): p1, 11rp, p6, 11lp, ns, m1, 11rp, p6, 11lp, p1

**Chart**



Key	
	1/1 Left Cross 11lc  (RS) Sl 1 to front, k1, k st from cn (WS) Sl 1 to back, k1, p st from cn
	1/1 Right Cross 11rc  (RS) Sl 1 to back, k1, k st from cn (WS) Sl 1 to front, p1, k st from cn
	Knit k  (RS) Knit (WS) Purl
	Knit 2 Together k2tog  (RS) Knit 2 stitches together (WS) Purl 2 Together
	Make One Knitwise m1  (RS) Make one by lifting strand in between stitch just worked and the next stitch, knit into back of this thread (WS) Make one by lifting strand in between stitch just worked and the next stitch, purl into back of this thread
	No Stitch nst  (RS) No Stitch (WS) Knit
	Purl p  (RS) Purl (WS) Knit