

Fancy Cable Stitch Pattern



Cast on 17 stitches + 2 selv sts and work according to chart.

The chart shows RS rows + Row 1 (WS).

On WS rows, work all sts as they appear; work yos K.

The rep pat = 16 sts.

Begin with 1 selv st, work patt rep throughout, end with st after patt rep and 1 selv st.

Work rows 1-19 once, then rep rows 20-59 throughout.

Row 1 (ws): p1, k1, p1, k1, p1, k1, p5, k1, p1, k1, p1, k1, p1

Row 2 (rs): k1, p1, k1, p1, k1, p1, k5, p1, k1, p1, k3

Row 4 (rs): k1, p1, k1, p1, k1, p1, t5f3, p1, k1, p1, k1, p1, k1

Row 6: k1, p1, k1, p1, k1, p1, k5, p1, k1, p1, k1, p1, k1

Row 8: k1, p1, k1, p1, k1, p1, k5, p1, k1, p1, k1, p1, k1

Row 10: k1, p1, k1, p1, k1, p1, t5f3, p1, k1, p1, k1, p1, k1

Row 12: k1, p1, k1, p1, p2tog, k2, yok, p1, yok, k2, p2tog, p1, k1, p1, k1

Row 14: k1, p1, k1, p2tog, k3, yok, p1, yok, k3, p2tog, k1, p1, k1

Row 16: k1, p1, p2tog, k4, yok, p1, yok, k4, p2tog, p1, k1

Row 18: k1, p2tog, k5, yok, p1, yok, k5, p2tog, k1

Row 20: k1, p1, c6r, p1, c6l, p1, k1

Row 22: k1, p2, k5, p1, k5, p2, k1

Row 24: k1, p3, k4, p1, k4, p3, k1

Row 26: k1, p4, k3, p1, k3, p4, k1

Row 28: p1, k1, p4, k2, p1, k2, p4, k1, p1

Row 30: p1, k2, p4, k1, p1, k1, p4, k2, p1

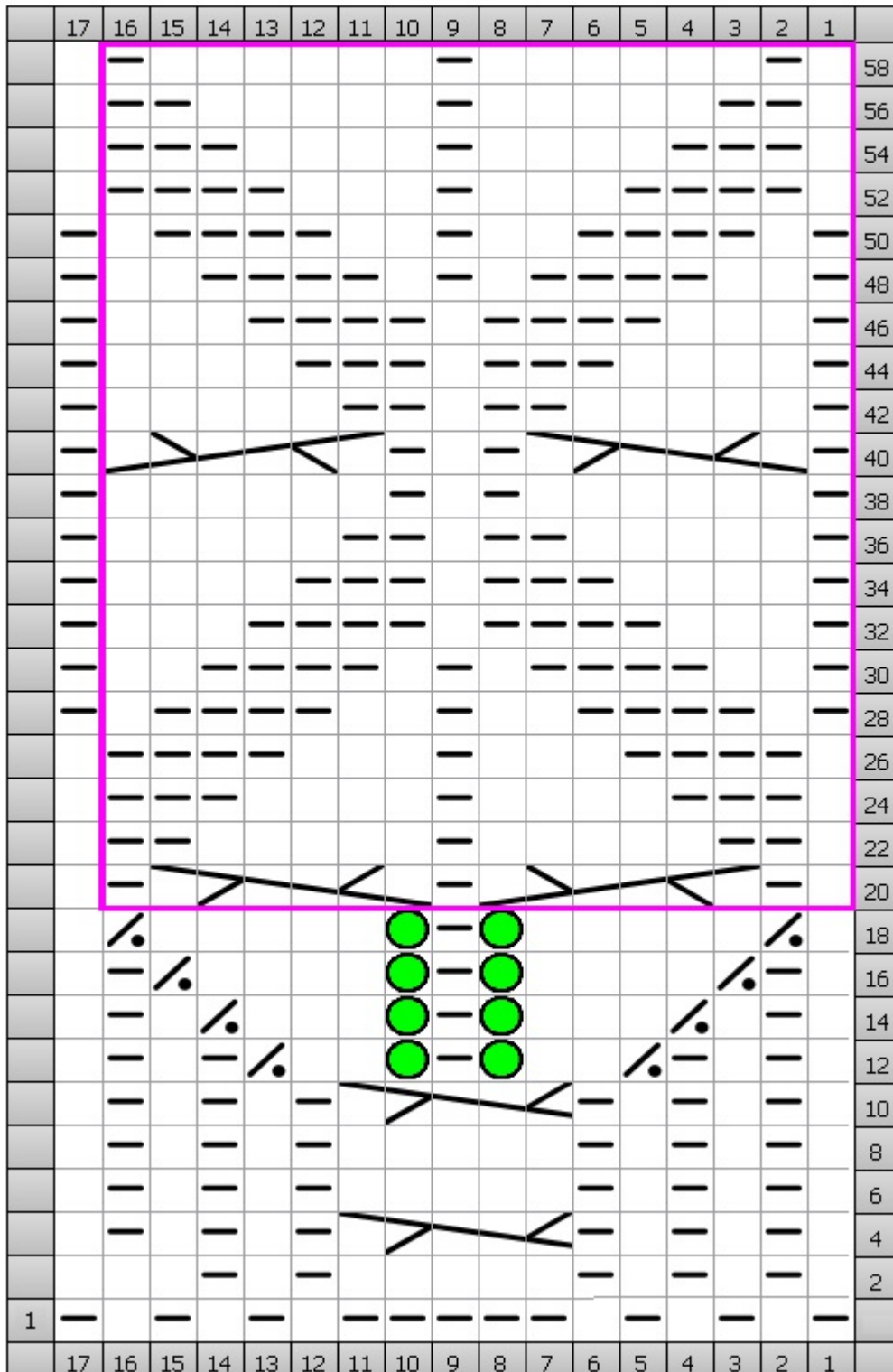
Row 32: p1, k3, p4, k1, p4, k3, p1

Row 34: p1, k4, p3, k1, p3, k4, p1

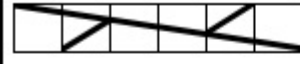
Row 36: p1, k5, p2, k1, p2, k5, p1

Row 38: p1, k6, p1, k1, p1, k6, p1
Row 40: p1, c6l, p1, k1, p1, c6r, p1
Row 42: p1, k5, p2, k1, p2, k5, p1
Row 44: p1, k4, p3, k1, p3, k4, p1
Row 46: p1, k3, p4, k1, p4, k3, p1
Row 48: p1, k2, p4, k1, p1, k1, p4, k2, p1
Row 50: p1, k1, p4, k2, p1, k2, p4, k1, p1
Row 52: k1, p4, k3, p1, k3, p4, k1
Row 54: k1, p3, k4, p1, k4, p3, k1
Row 56: k1, p2, k5, p1, k5, p2, k1
Row 58: k1, p1, k6, p1, k6, p1, k1

Chart

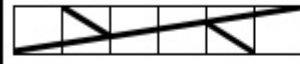


Key



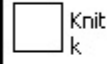
Cable 6 Left
c6l

(RS) Sl 3 sts to f, k3, k3 from cn



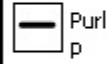
Cable 6 Right
c6r

(RS) Sl 3 sts to b, k3, k3 from cn



Knit
k

(RS) Knit



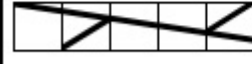
Purl
p

(RS) Purl



Purl 2 Together
p2tog

(RS) Purl 2 Together



Twist 5 Front 3
t5F3

(RS) Sl 3 to cn, hold to front, k2, k3 from cn



Yarn Over
yok

(RS) Yarn Over, on WS rows work yos K