

Diamond Lace Knitt Pattern



Cast on 49 stitches + 2 selv sts and work according to chart.

Multiple of 24 + 1 + 2 selv sts.

The chart shows only RS rows and does not show selv sts.

On WS rows, work all sts as they appear; work yos P.

The pat rep = 24 sts.

Begin with 1 selv st, work patt rep throughout, end with stitch after patt rep and 1 selv st.

In height repeat rows 1 - 28 throughout.

Row 1: k1, yo, skp, yo, k2, skp, p11, k2tog, k2, yo, k2tog, yo, k1, yo, skp, yo, k2, skp, p11, k2tog, k2, yo, k2tog, yo, k1

Row 3: k2, yo, skp, yo, k2, skp, p9, k2tog, k2, yo, k2tog, yo, k3, yo, skp, yo, k2, skp, p9, k2tog, k2, yo, k2tog, yo, k2

Row 5: k3, yo, skp, yo, k2, skp, p7, k2tog, k2, yo, k2tog, yo, k5, yo, skp, yo, k2, skp, p7, k2tog, k2, yo, k2tog, yo, k3

Row 7: k4, yo, skp, yo, k2, skp, p5, k2tog, k2, yo, k2tog, yo, k7, yo, skp, yo, k2, skp, p5, k2tog, k2, yo, k2tog, yo, k4

Row 9: k5, yo, skp, yo, k2, skp, p3, k2tog, k2, yo, k2tog, yo, k9, yo, skp, yo, k2, skp, p3, k2tog, k2, yo, k2tog, yo, k5

Row 11: k6, yo, skp, yo, k2, skp, p1, k2tog, k2, yo, k2tog, yo, k11, yo, skp, yo, k2, skp, p1, k2tog, k2, yo, k2tog, yo, k6

Row 13: k49

Row 15: p6, k2tog, k2, yo, k2tog, yo, k1, yo, skp, yo, k2, skp, p11, k2tog, k2, yo, k2tog, yo, k1, yo, skp, yo, k2, skp, p6

Row 17: p5, k2tog, k2, yo, k2tog, yo, k3, yo, skp, yo, k2, skp, p9, k2tog, k2, yo, k2tog, yo, k3, yo, skp, yo, k2, skp, p5

Row 19: p4, k2tog, k2, yo, k2tog, yo, k5, yo, skp, yo, k2, skp, p7, k2tog, k2, yo, k2tog, yo, k5, yo, skp, yo, k2, skp, p4

Row 21: p3, k2tog, k2, yo, k2tog, yo, k7, yo, skp, yo, k2, skp, p5, k2tog, k2, yo, k2tog, yo, k7, yo, skp, yo, k2, skp, p3

Row 23: p2, k2tog, k2, yo, k2tog, yo, k9, yo, skp, yo, k2, skp, p3, k2tog, k2, yo, k2tog, yo, k9, yo, skp, yo, k2, skp, p2

Row 25: p1, k2tog, k2, yo, k2tog, yo, k11, yo, skp, yo, k2, skp, p1, k2tog, k2, yo, k2tog, yo, k11, yo, skp, yo, k2, skp, p1

Row 27: k49

Row 29: k1, yo, skp, yo, k2, skp, p11, k2tog, k2, yo, k2tog, yo, k1, yo, skp, yo, k2, skp, p11, k2tog, k2, yo, k2tog, yo, k1

Row 31: k2, yo, skp, yo, k2, skp, p9, k2tog, k2, yo, k2tog, yo, k3, yo, skp, yo, k2, skp, p9, k2tog, k2, yo, k2tog, yo, k2

Row 33: k3, yo, skp, yo, k2, skp, p7, k2tog, k2, yo, k2tog, yo, k5, yo, skp, yo, k2, skp, p7, k2tog, k2, yo, k2tog, yo, k3

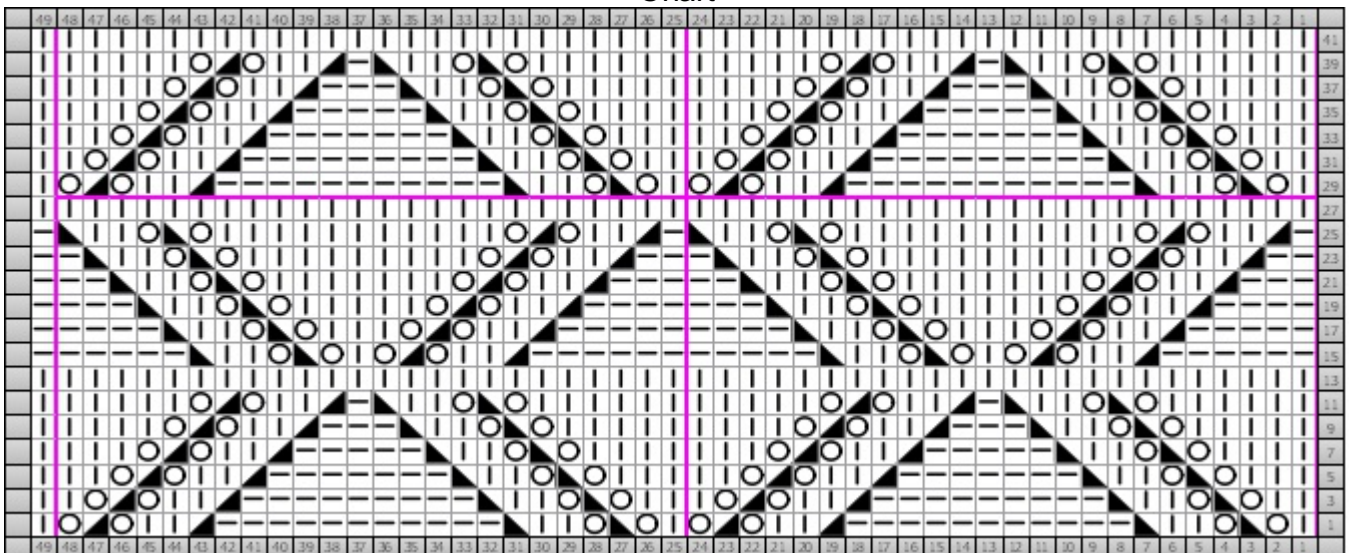
Row 35: k4, yo, skp, yo, k2, skp, p5, k2tog, k2, yo, k2tog, yo, k7, yo, skp, yo, k2, skp, p5, k2tog, k2, yo, k2tog, yo, k4



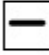


Row 37: k5, yo, skp, yo, k2, skp, p3, k2tog, k2, yo, k2tog, yo, k9, yo, skp, yo, k2, skp, p3, k2tog, k2, yo, k2tog, yo, k5

Row 39: k6, yo, skp, yo, k2, skp, p1, k2tog, k2, yo, k2tog, yo, k11, yo, skp, yo, k2, skp, p1, k2tog, k2, yo, k2tog, yo, k6

Row 41: k49

Chart



Key	
	Knit k (RS) Knit
	Knit 2 Together k2tog (RS) Knit 2 stitches together
	Purl p (RS) Purl
	SKP skp (RS) slip 1 kwise, K1, pass slipped stitch over
	Yarn Over yo (RS) Yarn Over