

## ***Diamond Knit Stitch Pattern***



Cast on 40 stitches + 2 selv sts and work according to chart.

The chart shows only RS rows.

On WS rows, work all sts P.

The pat rep = 20 sts.

Begin with 1 selv st and sts before patt rep, work patt rep throughout, end with sts after patt and 1 selv st.

Work rows 1-42 once, then rep rows 15-42 throughout.

Row 1: k6, c4b, c4f, k12, c4b, c4f, k6

Row 3: p4, c4bp, p4, c4fp, p8, c4bp, p4, c4fp, p4

Row 5: k2, c4b2, c4f2, k4, c4b2, c4f2, k2

Row 7: c4bp2, p4, c4fp2, c4bp2, p4, c4fp2

Row 9: k2, c4b, k8, c4f, k4, c4b, k8, c4f, k2

Row 11: c4bp, p2, c4bp, c4fp, p2, c4fp, c4bp, p2, c4bp, c4fp, p2, c4fp

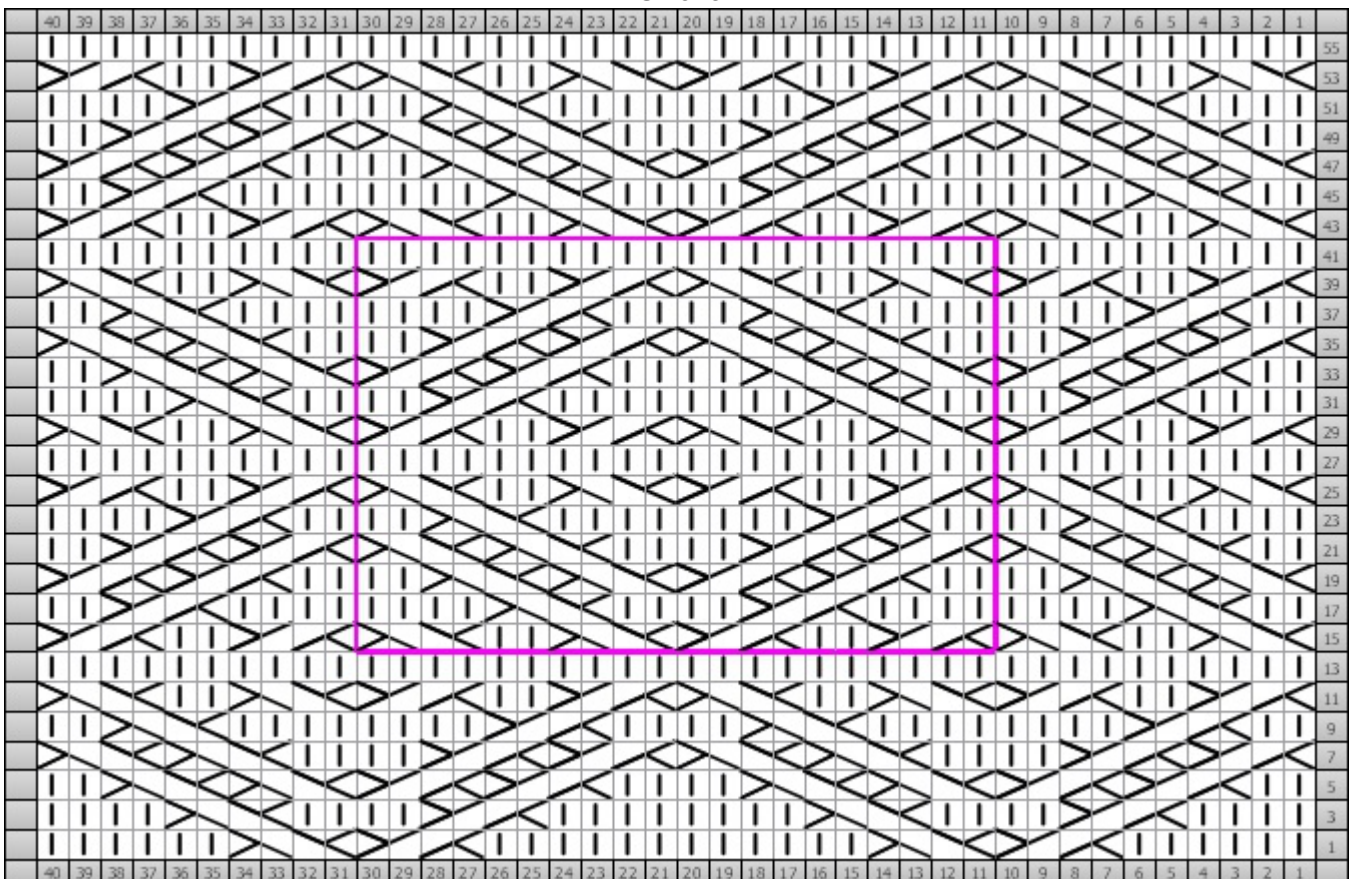
Row 13: k40

Row 15: c4fp, p2, c4fp, c4bp, p2, c4bp, c4fp, p2, c4fp, c4bp, p2, c4bp

Row 17: k2, c4f, k8, c4b, k4, c4f, k8, c4b, k2

Row 19: c4fp2, p4, c4bp2, c4fp2, p4, c4bp2  
 Row 21: k2, c4f2, c4b2, k4, c4f2, c4b2, k2  
 Row 23: p4, c4fp, p4, c4bp, p8, c4fp, p4, c4bp, p4  
 Row 25: c4f, k2, c4f, c4b, k2, c4b, c4f, k2, c4f, c4b, k2, c4b  
 Row 27: p40  
 Row 29: c4b, k2, c4b, c4f, k2, c4f, c4b, k2, c4b, c4f, k2, c4f  
 Row 31: p4, c4bp, p4, c4fp, p8, c4bp, p4, c4fp, p4  
 Row 33: k2, c4b2, c4f2, k4, c4b2, c4f2, k2  
 Row 35: c4bp2, p4, c4fp2, c4bp2, p4, c4fp2  
 Row 37: k2, c4b, k8, c4f, k4, c4b, k8, c4f, k2  
 Row 39: c4bp, p2, c4bp, c4fp, p2, c4fp, c4bp, p2, c4bp, c4fp, p2, c4fp  
 Row 41 (rs): k40  
 Row 43: c4fp, p2, c4fp, c4bp, p2, c4bp, c4fp, p2, c4fp, c4bp, p2, c4bp  
 Row 45: k2, c4f, k8, c4b, k4, c4f, k8, c4b, k2  
 Row 47: c4fp2, p4, c4bp2, c4fp2, p4, c4bp2  
 Row 49: k2, c4f2, c4b2, k4, c4f2, c4b2, k2  
 Row 51: p4, c4fp, p4, c4bp, p8, c4fp, p4, c4bp, p4  
 Row 53: c4f, k2, c4f, c4b, k2, c4b, c4f, k2, c4f, c4b, k2, c4b  
 Row 55: p40

### Chart

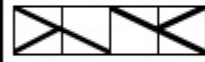


## Key



Cable 4 Back  
c4b

(RS) Sl 2 to back, k2, k2 sts from cn



Cable 4 Front  
c4f

(RS) Sl 2 to front, k2, k2 sts from cn



Knit  
k

(RS) Knit