

## ***Diamond Cable Knit Stitich Pattern***



Cast on 33 stitches + 2 selv sts and work according to chart.

The chart shows only RS rows.

On WS rows, work all sts as they appear; work yos P.

The pat rep = 14 sts.

Begin with 1 selv st and sts before patt rep, work patt rep throughout, end with sts after patt and 1 selv st.

Repeat rows 1- 28 throughout.

Row 1: c5f2p, p9, c5f2p, p9, c5f2p

Row 3: k2, p26, k2, p1, k2

Row 5: c5f2p, p9, c5f2p, p9, c5f2p

Row 7: k2, p1, yo, k1, skp, p7, k2tog, k1, yo, p1, yo, k1, skp, p7, k2tog, k1, yo, p1, k2

Row 9: k2, p2, yo, k1, skp, p5, k2tog, k1, yo, p3, yo, k1, skp, p5, k2tog, k1, yo, p2, k2

Row 11: k2, p3, yo, k1, skp, p3, k2tog, k1, yo, p5, yo, k1, skp, p3, k2tog, k1, yo, p3, k2

Row 13: k2, p4, yo, k1, skp, p1, k2tog, k1, yo, p7, yo, k1, skp, p1, k2tog, k1, yo, p4, k2

Row 15: k2, p5, c5f2p, p9, c5f2p, p5, k2

Row 17: k2, p5, k2, p1, k2, p9, k2, p1, k2, p5, k2

Row 19: k2, p5, c5f2p, p9, c5f2p, p5, k2

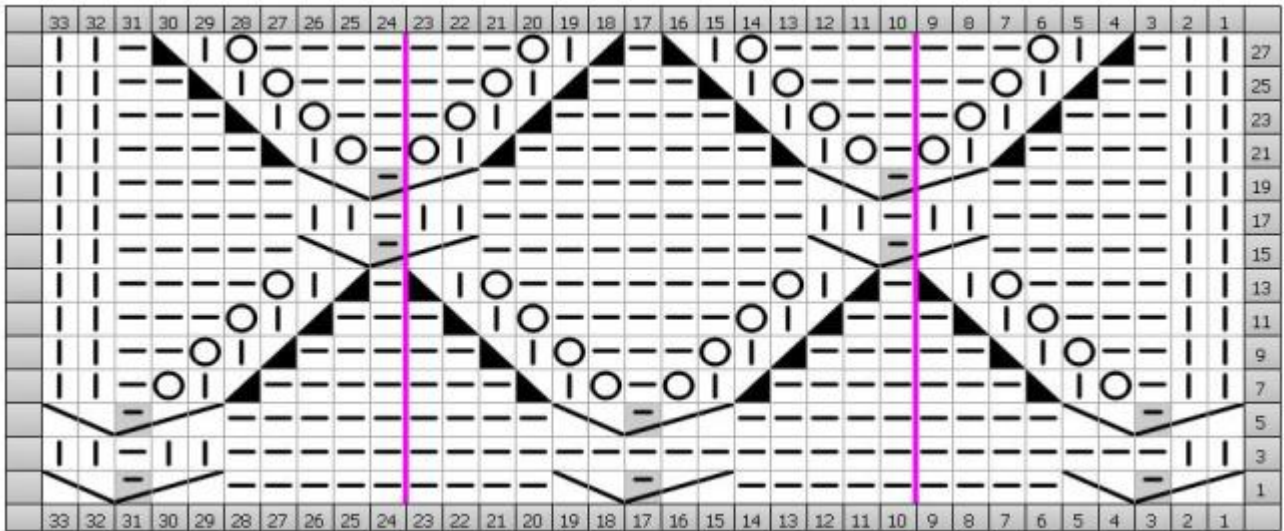
Row 21: k2, p4, k2tog, k1, yo, p1, yo, k1, skp, p7, k2tog, k1, yo, p1, yo, k1, skp, p4, k2

Row 23: k2, p3, k2tog, k1, yo, p3, yo, k1, skp, p5, k2tog, k1, yo, p3, yo, k1, skp, p3, k2

Row 25: k2, p2, k2tog, k1, yo, p5, yo, k1, skp, p3, k2tog, k1, yo, p5, yo, k1, skp, p2, k2

Row 27: k2, p1, k2tog, k1, yo, p7, yo, k1, skp, p1, k2tog, k1, yo, p7, yo, k1, skp, p1, k2

**Chart**



### Key



Cable 5 Front purl  
c5f2p

(RS) Sl 2 sts to first cn and hold at front, sl 1 st to 2nd cn and hold at back, k2, then p1 from 2nd cn, then k2 from 1st cn



Knit  
k

(RS) Knit



Knit 2 Together  
k2tog

(RS) Knit 2 stitches together



Purl  
p

(RS) Purl



SKP  
skp

(RS) Slip 1, knit 1, pass slipped stitch over



Yarn Over  
yo

(RS) Yarn Over