

## Cable Knit Pattern



Cast on 20 stitches + 2 selv sts and work according to chart.

The chart shows only RS rows.

On WS rows, work all sts as they appear.

The pat rep = 12 sts.

Begin with 1 selv st and sts before patt rep, work patt rep throughout, end with sts after patt and 1 selv st.

Repeat rows 1- 28 throughout.

Row 1: k2, p1, k2, 21lpc, p1, 11rc, p1, 21rpc, k2, p1, k2

Row 3: k2, p1, 11rc, p1, 21lpc, k2, 21rpc, p1, 11rc, p1, k2

Row 5: k2, p1, k2, p2, c4b, k2, p2, k2, p1, k2

Row 7: k2, p1, 11rc, p2, k2, c4f, p2, 11rc, p1, k2

Row 9: k2, p1, k2, p2, k6, p2, k2, p1, k2

Row 11: k2, p1, 11rc, p2, c4b, k2, p2, 11rc, p1, k2

Row 13: k2, p1, k2, p2, k2, c4f, p2, k2, p1, k2

Row 15: k2, p1, 11rc, p1, 21rpc, k2, 21lpc, p1, 11rc, p1, k2

Row 17: 21lpc, k2, 21rpc, p1, 11rc, p1, 21lpc, k2, 21rpc

Row 19: p1, c4b, k2, p2, k2, p2, c4b, k2, p1

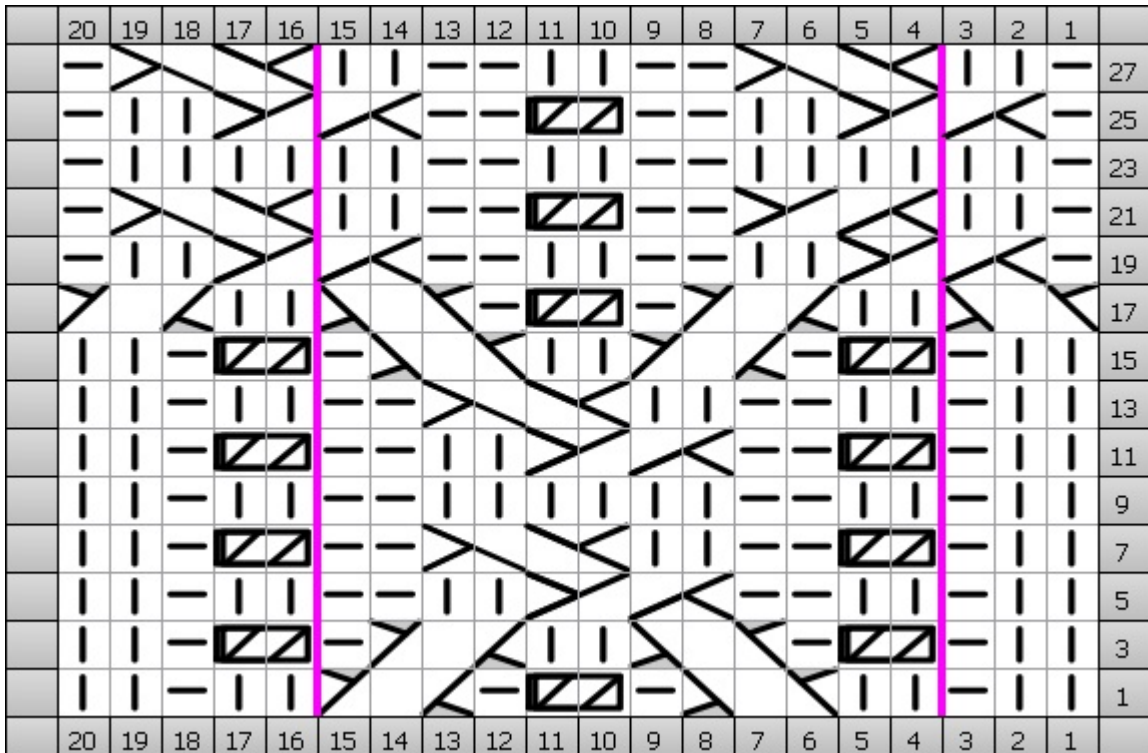
Row 21: p1, k2, c4b, p2, 11rc, p2, k2, c4f, p1

Row 23: p1, k6, p2, k2, p2, k6, p1

Row 25: p1, c4b, k2, p2, 11rc, p2, c4b, k2, p1

Row 27: p1, k2, c4f, p2, k2, p2, k2, c4f, p1

### Chart



Key	
	1/1 Right Cross 11rc (RS) Sl 1 to back, k1, k st from cn
	2/1 LPC 21lpc (RS) Sl 2 to cn, hold to front, p; k2 from cn
	2/1 RPC 21rpc (RS) Sl 1 to cn, hold to back, k2; p1 from cn
	Cable 4 Back c4b (RS) Sl 2 to back, k2, k2 sts from cn
	Cable 4 Front c4f (RS) Sl 2 to front, k2, k 2 sts from cn
	Knit k (RS) Knit
	Purl p (RS) Purl