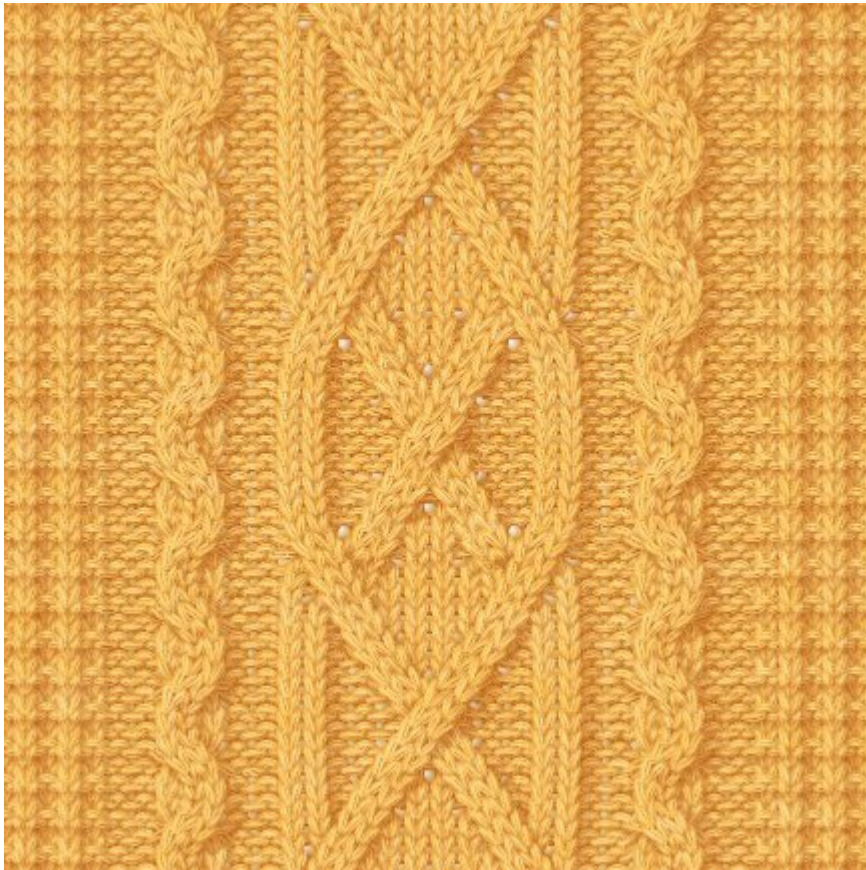


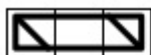
Cable Knit Pattern



Chart

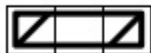
	44	43	42	41	40	39	38	37	36	35	34	33	32	31	30	29	28	27	26	25	24	23	22	21	20	19	18	17	16	15	14	13	12	11	10	9	8	7	6	5	4	3	2	1					
31										X	X																																						
29																			X																														
27										X	X																																						
25																																																	
23										X	X																																						
21																																																	
19										X	X																																						
17																																																	
15										X	X																																						
13																																																	
11										X	X																																						
9																																																	
7										X	X																																						
5																																																	
3										X	X																																						
1																																																	
	44	43	42	41	40	39	38	37	36	35	34	33	32	31	30	29	28	27	26	25	24	23	22	21	20	19	18	17	16	15	14	13	12	11	10	9	8	7	6	5	4	3	2	1					

Key



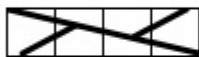
2/1 Left Cross
21lc

(RS) Sl 2 to front, k1, k2 from cn



2/1 Right Cross
21rc

(RS) Sl 1 to back, k2, k1 from cn



Cable 4 Left
c4l

(RS) Sl 2 sts to f, k2, k2 from cn



Cable 4 Right
c4r

(RS) Sl 2 sts to b, k2, k2 from cn



Knit
k

(RS) Knit



Purl
p

(RS) Purl