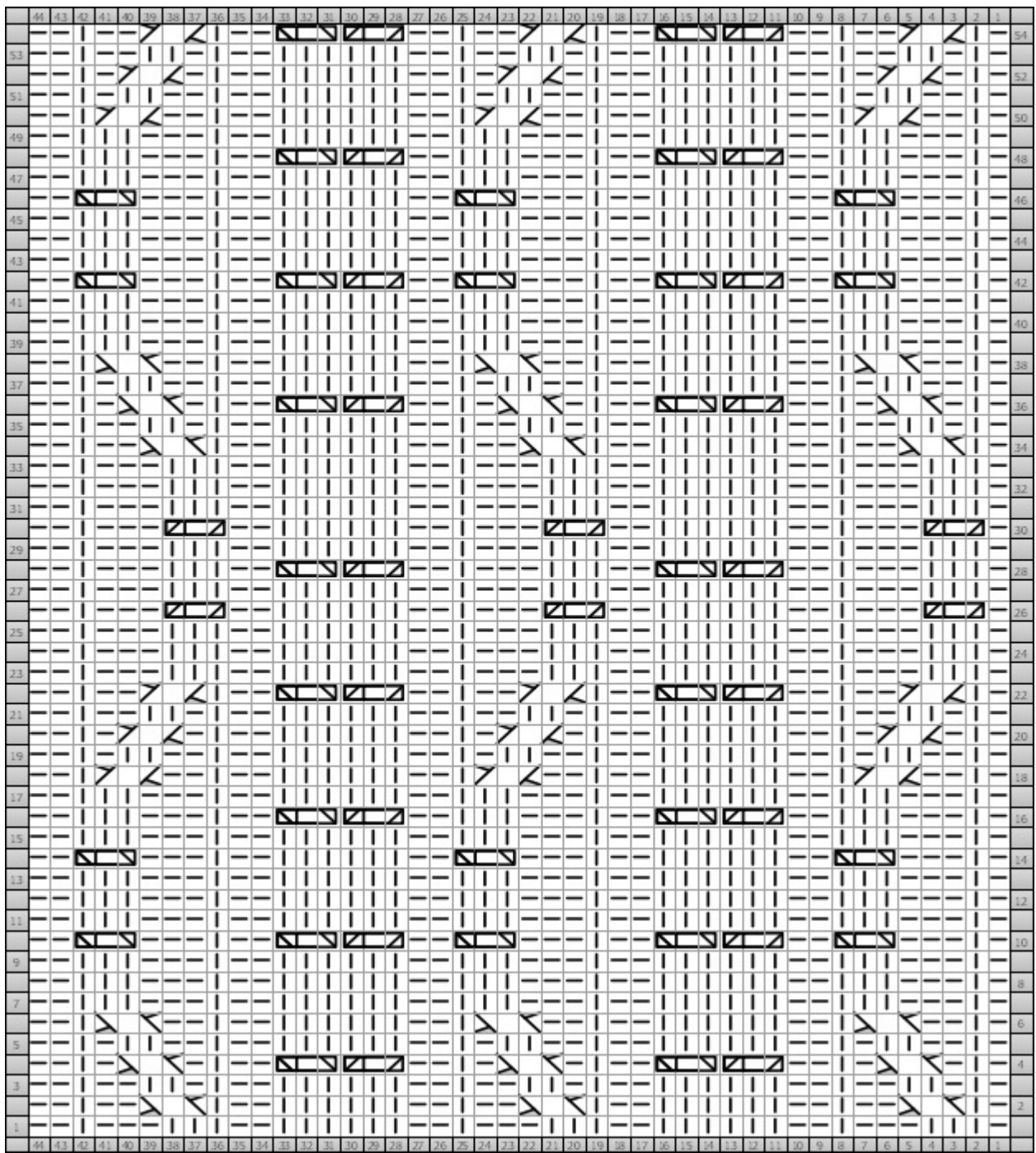
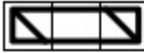

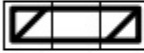


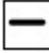


Cable Pattern



Chart



Key	
	2/1 Left Cross 21lc (RS) Sl 2 to front, k1, k2 from cn
	2/1 LPC 21lpc (RS) Sl 2 to cn, hold to front, p; k2 from cn
	2/1 Right Cross 21rc (RS) Sl 1 to back, k2, k1 from cn
	2/1 RPC 21rpc (RS) Sl 1 to cn, hold to back, k2; p1 from cn
	Knit k (RS) Knit
	Purl p (RS) Purl