

Chart 1

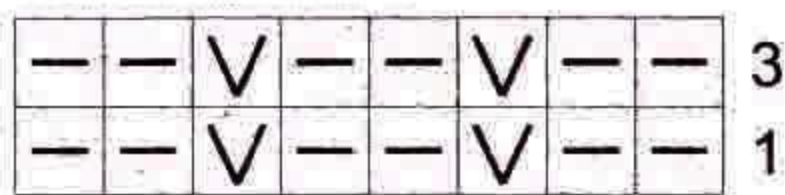


Chart 2

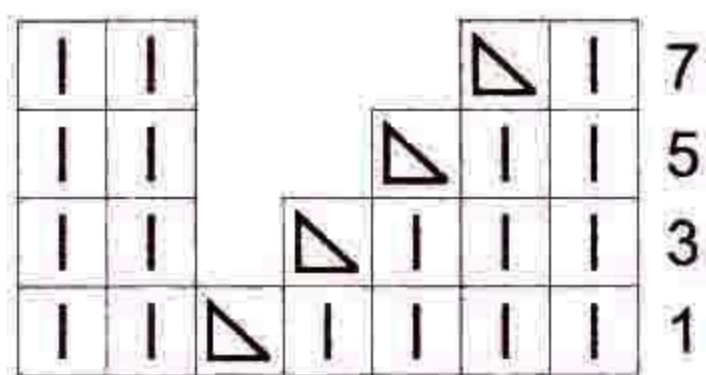


Chart 3

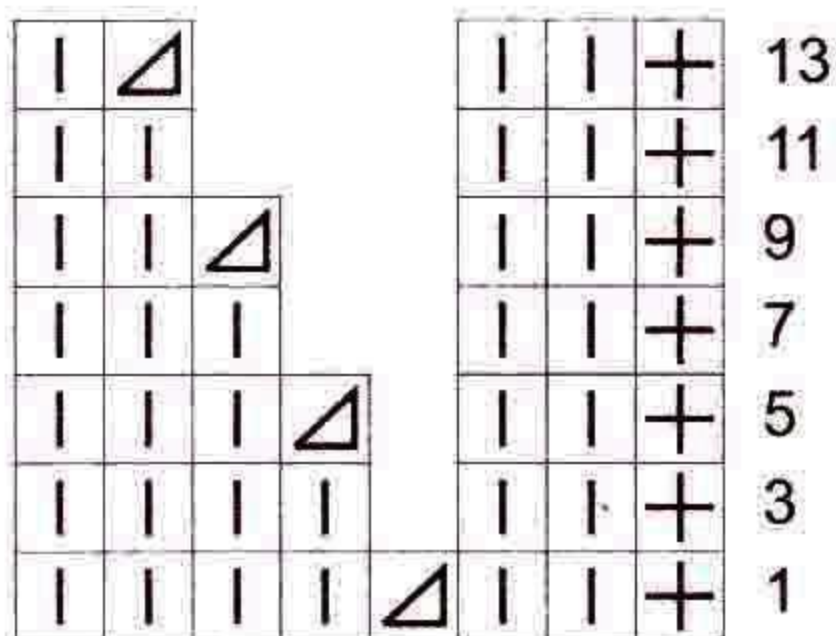
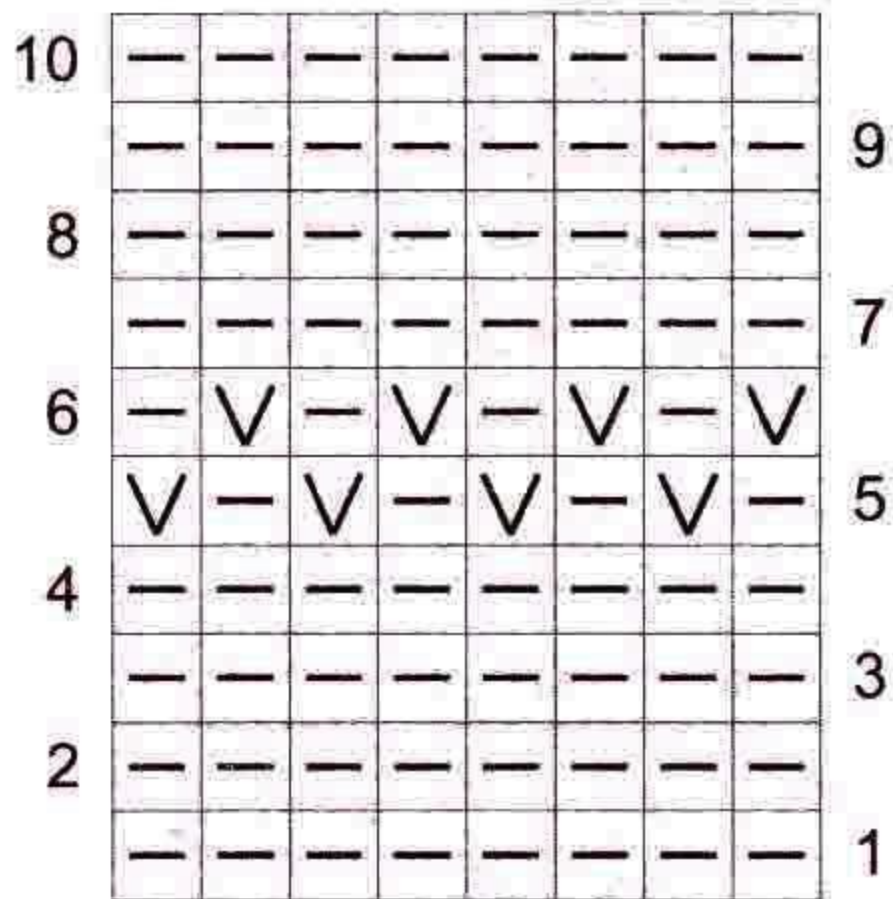


Chart 4



⎓ = K1

— = P1

∇ = Brioche stitch: Slip stitch with yarn over as if to purl, with yarn in front. WS row: purl them together as one

◁ = K2tog

▷ = 1 skpo: sl1 kwise, K1, pss0

⊗ = 1 st in gst: Work all sts K on RS rows and WS rows.

— ∇ — = 1 Brioche stitch onto cable needle and leave at front of work; P2 from left-hand needle and 1 Brioche stitch from cable needle

∇ — — = sl 2 sts onto cable needle and leave at back of work; 1 Brioche stitch from left-hand needle and P2 from cable needle

⊕ = Selv st

Chart 5

